



**FACTSHEET**  
**(pursuant to NAC 445A.236)**

**Permittee Name:** GREAT BASIN WATER CO.  
1240 EAST STATE ST S-115  
PAHRUMP, NV 89048

**Permit Number:** NS2016502

**Permit Type:** GROUNDWATER DISCHARGE

**Designation:** GROUNDWATER

**New/Existing:** EXISTING

**Location:** SPRING MOUNTAIN MOTORSPORTS RANCH WASTEWATER TREATMENT PLANT, NYE  
2107 S. CORTINA AVE, PAHRUMP, NV 89048  
LATITUDE: 36.16776910, LONGITUDE: -115.910989  
TOWNSHIP: 20S, RANGE: 54E, SECTION: 33, 34

Outfall / Well Num	Outfall / Well Name	Location Type	Well Log Num	Latitude	Longitude	Receiving Water
001	PLANT EFFLUENT DISCHARGED TO RIBS	External Outfall	001	36.168528	-115.903562	GROUNDWATER
INF	INFLUENT - INCOMING DOMESTIC SEWAGE	Internal Outfall		36.16845420	-115.903156	NOT APPLICABLE

**Permit History/Description of Proposed Action**

The Permittee, Great Basin Water Company (GBWC), has applied for the renewal of Permit NS2016502 for the Spring Mountain Raceway (SMR) Wastewater Treatment Plant (WWTP), at 2107 S. Cortina Avenue, in Pahrump, within Nye County, Nevada. The Permittee proposes to continue discharging secondary-treated, denitrified wastewater to rapid infiltration basins (RIBs) located onsite.

This permit was first issued March 1, 2017, and expired on February 28, 2022; the permit has been administratively continued since.

**Facility Overview**

The SMR project is a planned development located in Pahrump, Nevada. The sewer system, upon project completion, will serve approximately 80 single family units and 20 acres of commercial development that includes a 1,250-seat movie theater, 125-room casino/hotel, restaurants, retail shops and racetrack facilities. An additional 42.6 acres of future commercial development is also planned to be serviced by the sewer system.

In 2020, GBWC completed installation of a 0.089 (30-day average)/ 0.1 million gallons per day (Mgal/d) daily maximum design capacity Smith and Loveless FAST (Fixed Activated Sludge Treatment) WWTP at

the Spring Mountain Motor Resort and Country Club in Pahrump, within Nye County, Nevada. The FAST system is a fixed bed bioreactor that provides secondary-treated, denitrified effluent. Current resort connections include the clubhouse, classrooms (restrooms) and lodging (condos). A former water feature (Lake Spring Mountain) is now being redeveloped into an RV Park.

Domestic sewage flows through the lift station, a package submersible pump and wet well system manufactured by Flygt, through 2,350-feet of 6-inch diameter high-density polyethylene (HDPE) force main which delivers wastewater from the lift station to the SMR WWTP.

The SMR WWTP includes a mechanical screen at the plant inlet, compartments for flow equalization, sludge holding and digestion, anoxic nitrate reduction, carbonaceous reduction and nitrification, along with clarification and disinfection. The FAST Media provides a high surface area for beneficial wastewater microbes, which allows adaptability to flow swings, e.g., weekend race events. The secondary-treated effluent is infiltrated, via four RIBs, into the groundwater.

Digested, waste activated sludge (WAS) is pumped and hauled to the main GBWC Plant #3 in Pahrump for additional treatment, dewatering and disposal at the county landfill.

### **Outfall Summary**

Outfall INF - This is a new outfall. This internal outfall is for monitoring the incoming domestic sewage (influent) entering the SMR WWTP.

Outfall 001 - This external outfall is for measuring and monitoring the treated wastewater discharged into the RIBs.

### **Facility Upgrades since last issued permit**

In 2020, GBWC completed installation of a 0.089 (30-day average)/0.1 million gallons per day (Mgal/d) design capacity Smith and Loveless FAST WWTP at the SMR. Sewer connections include the clubhouse, classrooms (restrooms) and lodging (condos), with a current water feature (Lake Spring Mountain) being redeveloped into an RV Park.

### **Solids Handling**

Digested WAS is pumped and hauled to GBWC's WWTP Plant #3 in Pahrump for additional treatment and dewatering, and then taken to the county landfill for disposal.

### **Effluent Management and Reuse**

Secondary-treated wastewater is discharged to RIBs located onsite. There is no reuse.

### **Design Flow (and basis) and Measurement & Current Capacity**

The SMR WWTP was designed with a 30-day average flow rate of 0.089 million gallons per day (Mgal/d), with a daily maximum flow rate of 0.10 Mgal/d.

The reported long-term average flow rate for Outfall 001 (Effluent) was 0.008 Mgal/d, while reported daily maximum flow rate for Outfall 001 was 0.01 Mgal/d. There were no reported exceedances to this limit. Based on these rates, the SMR WWTP is estimated to be at approximately 10% capacity.

### **Pretreatment Program**

The facility does not meet the federal Environmental Protection Agency's (EPA's) guidelines requiring them to have a pretreatment program.

### **Operations & Maintenance (O&M) Manual status**

The SMR WWTP's O&M Manual was last reviewed and approved on September 12, 2019. The Technical, Compliance, and Enforcement Branch of the Bureau of Water Pollution Control requires O&M Manuals to be updated every ten (10) years, with an updated O&M Manual due on September 12, 2029.

### **Effluent Characterization**

Nevada State Network Discharge Monitoring Report (NetDMR) data, as reported from January 2020 to December 2025, was reviewed as part of this permit renewal process. The SMR WWTP discharges secondary-treated, denitrified wastewater to the RIBs.

The following reported averages were taken from January 2020 to December 2025 reporting period:

Abbreviations:

BOD5 – Biochemical Oxygen Demand, 5-day

TSS – Total Suspended Solids

mg/L – Milligrams per Liter

Mgal/d – Million Gallons per Day

S.U. – Standard Units

Outfall 001 (Effluent):

BOD5: 6.49 mg/L

Flow Rate: 0.01 Mgal/d

Nitrogen, total: 15.32 mg/L

pH: 7.51 S.U.

TPH: 0.65 mg/L

TSS: 7.68 mg/L

Removal rates could not be determined as the influent's BOD5 and TSS concentrations were not required to be reported under the previous permit. An outfall has been added for these constituents to track the performance of the SMR WWTP.

### **Pollutants of Concern**

Pollutants of concern are any pollutants or parameters that are believed to be present in the discharge and could affect or alter the physical, chemical, or biological condition of the receiving water. Common pollutants of concern for wastewater treatment plants are Chloride, Nitrogen, pH, along with potential inorganic chemicals and analytes.

### **Receiving Water**

The receiving water is groundwater of the state of Nevada. Depth to groundwater in the area is reported to be 60-120 feet below the ground surface.

### **Compliance History**

The SMR WWTP was in compliance during the period reviewed (January 2020-December 2025), with the exception of total nitrogen for which the operator is working on a solution including the use of carbon source addition in solution and manual operations of the aeration system along with automatic aeration timing.

### **Proposed Effluent Limitations**

The discharge shall be limited, sampled, and monitored by the Permittee as specified below:

**WWTP Discharge Limitations Table for Sample Location 001 (Effluent Discharged To Ribs-External Outfall) To Be Reported Monthly**

Discharge Limitations				Monitoring Requirements			
Parameter	Base	Quantity	Concentration	Monitoring Loc	Sample Loc	Measurement Frequency	Sample Type
Flow rate	Daily Maximum	<= 0.089 Million Gallons per Day (Mgal/d)		Effluent Gross	001	Continuous	METER
Flow rate	Monthly Average	M&R Million Gallons per Day (Mgal/d)		Effluent Gross	001	Continuous	METER
BOD, 5-day <sup>[1]</sup>	Daily Maximum		<= 45 Milligrams per Liter (mg/L)	Effluent Gross	001	Monthly	DISCRT
BOD, 5-day <sup>[1]</sup>	Monthly Average		<= 30 Milligrams per Liter (mg/L)	Effluent Gross	001	Monthly	DISCRT
Nitrogen, total	Daily Maximum		<= 10 Milligrams per Liter (mg/L)	Effluent Gross	001	Monthly	DISCRT
pH, maximum	Daily Maximum		<= 9.0 Standard Units (SU)	Effluent Gross	001	Monthly	DISCRT
pH, minimum	Daily Minimum		>= 6.0 Standard Units (SU)	Effluent Gross	001	Monthly	DISCRT
Solids, total suspended <sup>[1]</sup>	Daily Maximum		<= 45 Milligrams per Liter (mg/L)	Effluent Gross	001	Monthly	DISCRT
Solids, total suspended <sup>[1]</sup>	Monthly Average		<= 30 Milligrams per Liter (mg/L)	Effluent Gross	001	Monthly	DISCRT
BOD, 5-day, percent removal	Monthly Average Minimum		>= 85 Percent (%)	Effluent Gross	001	Monthly	CALCTD
Solids, suspended percent removal	Monthly Average Minimum		>= 85 Percent (%)	Effluent Gross	001	Monthly	CALCTD

Notes (WWTP Discharge Limitations Table):

1. Sampling for both BOD5 and TSS should be performed concurrently with the sampling of the influent (Outfall INF) for the same parameters to determine exact levels of removal achieved.

**WWTP Discharge Limitations Table for Sample Location 001 (Effluent Discharged To Ribs-External Outfall) To Be Reported Annually**

Discharge Limitations				Monitoring Requirements			
Parameter	Base	Quantity	Concentration	Monitoring Loc	Sample Loc	Measurement Frequency	Sample Type
Hydrocarbons, total petroleum	Daily Maximum		<= 1.0 Milligrams per Liter (mg/L)	Effluent Gross	001	Annual	DISCRT

**WWTP Discharge Limitations Table for Sample Location 001 (Effluent Discharged To Ribs-External Outfall) To Be Reported Once During The Permit Term**

Discharge Limitations				Monitoring Requirements			
Parameter	Base	Quantity	Concentration	Monitoring Loc	Sample Loc	Measurement Frequency	Sample Type
Alkalinity, bicarbonate (as CaCO <sub>3</sub> )	Daily Maximum		M&R Milligrams per Liter (mg/L)	Effluent Gross	001	Once Per Permit Term	DISCRT
Alkalinity, total (as CaCO <sub>3</sub> )	Daily Maximum		M&R Milligrams per Liter (mg/L)	Effluent Gross	001	Once Per Permit Term	DISCRT
Aluminum, dissolved (as Al)	Daily Maximum		M&R Milligrams per Liter (mg/L)	Effluent Gross	001	Once Per Permit Term	DISCRT
Antimony, dissolved (as Sb)	Daily Maximum		M&R Milligrams per Liter (mg/L)	Effluent Gross	001	Once Per Permit Term	DISCRT
Arsenic, dissolved (as As)	Daily Maximum		M&R Milligrams per Liter (mg/L)	Effluent Gross	001	Once Per Permit Term	DISCRT
Barium, dissolved (as Ba)	Daily Maximum		M&R Milligrams per Liter (mg/L)	Effluent Gross	001	Once Per Permit Term	DISCRT
Beryllium, dissolved (as Be)	Daily Maximum		M&R Milligrams per Liter (mg/L)	Effluent Gross	001	Once Per Permit Term	DISCRT
Cadmium, dissolved (as Cd)	Daily Maximum		M&R Milligrams per Liter (mg/L)	Effluent Gross	001	Once Per Permit Term	DISCRT
Calcium, dissolved (as Ca)	Daily Maximum		M&R Milligrams per Liter (mg/L)	Effluent Gross	001	Once Per Permit Term	DISCRT
Chloride (as Cl)	Daily Maximum		M&R Milligrams per Liter (mg/L)	Effluent Gross	001	Once Per Permit Term	DISCRT
Chromium, dissolved (as Cr)	Daily Maximum		M&R Milligrams per Liter (mg/L)	Effluent Gross	001	Once Per Permit Term	DISCRT
			M&R				

**WWTP Discharge Limitations Table for Sample Location 001 (Effluent Discharged To Ribs-External Outfall) To Be Reported Once During The Permit Term**

Discharge Limitations				Monitoring Requirements			
Parameter	Base	Quantity	Concentration	Monitoring Loc	Sample Loc	Measurement Frequency	Sample Type
Copper, dissolved (as Cu)	Daily Maximum		Milligrams per Liter (mg/L)	Effluent Gross	001	Once Per Permit Term	DISCRT
Fluoride, total (as F)	Daily Maximum		M&R Milligrams per Liter (mg/L)	Effluent Gross	001	Once Per Permit Term	DISCRT
Iron, dissolved (as Fe)	Daily Maximum		M&R Milligrams per Liter (mg/L)	Effluent Gross	001	Once Per Permit Term	DISCRT
Lead, dissolved (as Pb)	Daily Maximum		M&R Milligrams per Liter (mg/L)	Effluent Gross	001	Once Per Permit Term	DISCRT
Magnesium, dissolved (as Mg)	Daily Maximum		M&R Milligrams per Liter (mg/L)	Effluent Gross	001	Once Per Permit Term	DISCRT
Manganese, dissolved (as Mn)	Daily Maximum		M&R Milligrams per Liter (mg/L)	Effluent Gross	001	Once Per Permit Term	DISCRT
Mercury, dissolved (as Hg)	Daily Maximum		M&R Milligrams per Liter (mg/L)	Effluent Gross	001	Once Per Permit Term	DISCRT
Nitrite plus nitrate total 1 det. (as N)	Daily Maximum		M&R Milligrams per Liter (mg/L)	Effluent Gross	001	Once Per Permit Term	DISCRT
Potassium, dissolved (as K)	Daily Maximum		M&R Milligrams per Liter (mg/L)	Effluent Gross	001	Once Per Permit Term	DISCRT
Selenium, dissolved [as Se]	Daily Maximum		M&R Milligrams per Liter (mg/L)	Effluent Gross	001	Once Per Permit Term	DISCRT
Silver, dissolved (as Ag)	Daily Maximum		M&R Milligrams per Liter (mg/L)	Effluent Gross	001	Once Per Permit Term	DISCRT
			M&R				

**WWTP Discharge Limitations Table for Sample Location 001 (Effluent Discharged To Ribs-External Outfall) To Be Reported Once During The Permit Term**

Discharge Limitations				Monitoring Requirements			
Parameter	Base	Quantity	Concentration	Monitoring Loc	Sample Loc	Measurement Frequency	Sample Type
Sodium, dissolved (as Na)	Daily Maximum		Milligrams per Liter (mg/L)	Effluent Gross	001	Once Per Permit Term	DISCRT
Sulfate, total (as SO4)	Daily Maximum		M&R Milligrams per Liter (mg/L)	Effluent Gross	001	Once Per Permit Term	DISCRT
Thallium, dissolved (as Tl)	Daily Maximum		M&R Milligrams per Liter (mg/L)	Effluent Gross	001	Once Per Permit Term	DISCRT
Solids, total dissolved	Daily Maximum		M&R Milligrams per Liter (mg/L)	Effluent Gross	001	Once Per Permit Term	DISCRT
Uranium, natural, total	Daily Maximum		M&R Milligrams per Liter (mg/L)	Effluent Gross	001	Once Per Permit Term	DISCRT
Cyanide, weak acid, dissociable	Daily Maximum		M&R Milligrams per Liter (mg/L)	Effluent Gross	001	Once Per Permit Term	DISCRT
Zinc, dissolved (as Zn)	Daily Maximum		M&R Milligrams per Liter (mg/L)	Effluent Gross	001	Once Per Permit Term	DISCRT

**WWTP Discharge Limitations Table for Sample Location Inf (Influent-Internal Outfall) To Be Reported Monthly<sup>[1]</sup>**

Parameter	Discharge Limitations			Monitoring Requirements			
	Base	Quantity	Concentration	Monitoring Loc	Sample Loc	Measurement Frequency	Sample Type
BOD, 5-day	Daily Maximum		M&R Milligrams per Liter (mg/L)	Raw Sewage Influent	INF	Monthly	DISCRT
BOD, 5-day	Monthly Average		M&R Milligrams per Liter (mg/L)	Raw Sewage Influent	INF	Monthly	DISCRT
Solids, total suspended	Daily Maximum		M&R Milligrams per Liter (mg/L)	Raw Sewage Influent	INF	Monthly	DISCRT
Solids, total suspended	Monthly Average		M&R Milligrams per Liter (mg/L)	Raw Sewage Influent	INF	Monthly	DISCRT

Notes (WWTP Discharge Limitations Table):

1. Sampling for both BOD5 and TSS should be performed concurrently with the sampling of the effluent (Outfall 001) for the same parameters to determine exact levels of removal achieved.

**Summary of Changes From Previous Permit**

Updated coordinates for facility location and outfalls to exact locations:

Facility: Lat. 36.1677691° N, Long. -115.9109893° W

Influent: Lat. 36.1684542° N, Long. -115.9031561° W

Effluent: Lat. 36.1685280° N, Long. -115.9035622° W

ADDED - Outfall INF (influent), To Be Reported Monthly, with the following parameters:

ADDED – BOD, 5-day, with a “Daily Maximum” Base, an “M&R Milligrams per Liter (mg/L)” Concentration, an “Raw Sewage Influent” Monitoring Location, an “INF” Sample Point, a “Monthly” Measurement Frequency, and a “Discrt” Sample Type.

ADDED – BOD, 5-day, with a “Monthly Average” Base, an “M&R Milligrams per Liter (mg/L)” Concentration, an “Raw Sewage Influent” Monitoring Location, an “INF” Sample Point, a “Monthly” Measurement Frequency, and a “Discrt” Sample Type.

ADDED – Solids, total suspended, with a “Daily Maximum” Base, an “M&R Milligrams per Liter (mg/L)” Concentration, an “Raw Sewage Influent” Monitoring Location, an “INF” Sample Point, a “Monthly” Measurement Frequency, and a “Discrt” Sample Type.

ADDED – Solids, total suspended, with a “Monthly Average” Base, an “M&R Milligrams per Liter (mg/L)” Concentration, an “Raw Sewage Influent” Monitoring Location, an “INF” Sample Point, a “Monthly” Measurement Frequency, and a “Discrt” Sample Type.

ADDED - Footnote 1.

Sampling for both BOD5 and TSS should be performed concurrently with the sampling of the effluent (Outfall 001) for the same parameters to determine exact levels of removal achieved.

Under Outfall 001 (Effluent), To Be Reported Monthly, the following parameters were added:

ADDED – BOD, 5-day, with a “Daily Maximum” Base, an “45 Milligrams per Liter (mg/L)” Concentration, an “Effluent Gross” Monitoring Location, an “001” Sample Point, a “Monthly” Measurement Frequency, and a “Discret” Sample Type.

ADDED – Solids, total suspended, with a “Daily Maximum” Base, an “45 Milligrams per Liter (mg/L)” Concentration, an “Effluent Gross” Monitoring Location, an “001” Sample Point, a “Monthly” Measurement Frequency, and a “Discret” Sample Type.

ADDED – BOD, 5-day, percent removal, with a “Monthly Average Minimum” Base, an “>=85 Percent (%)” Concentration, an “Effluent Gross” Monitoring Location, an “001” Sample Point, a “Monthly” Measurement Frequency, and a “Calcd” Sample Type.

ADDED – Solids, suspended percent removal, with a “Monthly Average Minimum” Base, an “>=85 Percent (%)” Concentration, an “Effluent Gross” Monitoring Location, an “001” Sample Point, a “Monthly” Measurement Frequency, and a “Calcd” Sample Type.

CHANGED – Flow, rate, with a “Monthly Maximum” Base to a “Daily Maximum” Base, the remaining discharge limitations and monitoring requirements remained the same as the previous permit.

CHANGED – pH, maximum, with a “Monthly Maximum” Base to a “Daily Maximum” Base, the remaining discharge limitations and monitoring requirements remained the same as the previous permit.

CHANGED – pH, minimum, with a “Monthly Minimum” Base to a “Daily Maximum” Base, the remaining discharge limitations and monitoring requirements remained the same as the previous permit.

ADDED - Footnote 1.

1. Sampling for both BOD5 and TSS should be performed concurrently with the sampling of the influent (Outfall INF) for the same parameters to determine exact levels of removal achieved.

ADDED - Outfall 001, To Be Reported Once a Permit Term, with the following parameters:

ADDED - Profile 1 parameters, with a "Daily Maximum" Base, a "M&R Milligrams per Liter" Concentration, an "Effluent Gross" Monitoring Location, a "001" Sample Point, a "Once during Permit Term" Measurement Frequency, and a "Discret" Sample Type.

### **Technology Based Effluent Limitations**

Technology based effluent limitations (TBELs) are required as promulgated by the United States (U.S.) EPA for Publicly Owned Treatment Works (POTWs). The following limits are based on secondary treatment standards, as allowed by the Code of Federal Regulation (CFR) Title 40, Section 133, and which has been adopted by the State of Nevada for both POTWs and privately owned treatment works. U.S. EPA published federal secondary treatment standards at 40 CFR 133 based on an evaluation of performance data for POTWs practicing a combination of physical and biological treatment. Performance is measured by monitoring biodegradable organics, suspended solids in the effluent, and ensuring pH remains within regulatory limits. Federal secondary treatment standards are defined under 40 CFR 133 for maximum BOD5 as a 30-day average of 30 mg/L and a 7-day average of 45 mg/L and for maximum TSS as a 30-day average of 30 mg/L and a 7-day average of 45 mg/L. In addition to describing the minimum levels of effluent quality attainable by secondary treatment, 40 CFR 133.102 states that the 30-day average percent removal of BOD5 and TSS shall not be less than 85%. The Division has adopted these standards for discharges from treatment facilities, and has applied the same 7-day average thresholds as daily maximum

effluent limits for BOD5 and TSS.

The following performance standards for POTWs with secondary treatment standards have been included in the permit:

BOD5: Monthly average limit:  $\leq 30$  mg/L; Daily maximum limit:  $\leq 45$  mg/L.

TSS: Monthly average limit:  $\leq 30$  mg/L; Daily maximum limit:  $\leq 45$  mg/L.

pH: Daily Maximum:  $\leq 9.0$  Standard Units

pH: Daily Minimum  $\geq 6.0$  Standard Units

Limits Based on Secondary Treatment Standards:

BOD5 Percent removal:  $\geq 85$  percent.

TSS: Percent removal:  $\geq 85$  percent.

Limits Based on Facility's Design Criteria Review:

30-day average flow rate for the effluent is limited to:  $\leq M\&R$  Mgal/d.

Daily maximum flow rate for the effluent is limited to:  $\leq 0.10$  Mgal/d.

### **Water Quality Based Effluent Limitations**

Water quality based effluent limitations are not applicable to this permit.

### **Proposed Water Quality Based Effluent Limits (monthly/weekly/daily)**

Water quality based effluent limits are not applicable to this permit.

### **Basis for Effluent Limitations**

There are currently no specific water quality standards that have been formally adopted by the State for groundwater. However, the Division has the discretion to implement effluent limitations outside water quality standards per NAC 445A.243, which states, "In establishing an effluent limitation to carry out the policy of this State set forth in Nevada Revised Statutes (NRS) 445A.305, consideration must be given to, but is not limited by the following: ... (2) the need for standards that specify by chemical, physical, biological or other characteristics the extent to which pollution by various substances will not be tolerated."

The requirement to monitor the effluent for pollutants of concern once per permit term is included to evaluate the quality of the effluent and determine whether the effluent has potential to impact the receiving water. Although cyanide and uranium are not expected to be present in the effluent, the permit requires the Permittee to sample these constituents once per term because they are included in the pollutants of concern list and have not been previously tested.

The constituents listed have been vetted by the Division and have been included in groundwater discharge permits for many years as a means of regulating groundwater quality. Per NRS 445A.490, "No permit may be issued which authorizes any discharge or injection of fluids through a well into any waters of the State: ... (3) which would result in the degradation of existing or potential underground sources of drinking water."

Influent and Effluent Monitoring Requirements:

Monthly influent and effluent monitoring for BOD5 and TSS are included to assess the treatment performance of the SMR WWTP. A monthly sampling frequency for BOD5 and TSS is sufficient for determining compliance with the applicable effluent limitations. Percent removal requirements for BOD5 and TSS are established in the permit as monthly average minimums of 85%, based on secondary treatment standards.

Some wastewater treatment processes can increase or decrease wastewater pH; therefore, monthly monitoring for pH is included in assessing compliance with effluent limits of 6.0 S.U. as a daily minimum and 9.0 S.U. as a daily maximum.

Monitoring is required to ensure that the treatment plant capacity is not exceeded, to assess the level of treatment being provided, and to monitor groundwater quality.

Treatment plant parameters for BOD5, TSS, and pH are typically required to be monitored by all wastewater treatment facilities. Limits are based on secondary treatment standards and used to assess the performance of the privately owned treatment works.

The permit retains the requirement to monitor TPH and is based on concerns of potential releases into the system due to onsite activities (racetrack along with vehicle storage and maintenance). TPH is a broad family of several hundred chemical compounds that originally come from crude oil - specifically gasoline, fuel oil, and asphalt (applicable to this permit). Sampling is required for human safety and to protect the environment.

### **Anti-backsliding**

None of the proposed permit's limits were changed to a less restrictive limit compared to those in the previous permit.

### **Antidegradation**

The Division has developed an antidegradation regulation that is applied on a statewide basis, and which meets the statutory requirements of Nevada's water pollution control law found at NRS 445A.520 and NRS 445A.565 and is consistent with the federal antidegradation policy found at 40 CFR § 131.12. The objective of the Division's antidegradation regulation is to prevent degradation of Nevada's surface waters and maintain the unique attributes and special characteristics and water quality associated with high-quality waters.

As this permit is for discharges to groundwater, and not surface water, the new antidegradation rule is not applicable.

### **Special Conditions**

There are no applicable Special Approvals/Conditions for this permit.

#### SA – Special Approvals / Conditions Table

There are no Special Approval / Condition items
---

### **Discharges From Future Outfalls/ Planned Facility Changes**

There are no planned discharges from future outfalls or facility changes.

### **Corrective Action Sites**

There are no active Bureau of Corrective Actions (BCA) remediation sites within a one-mile radius of the SMR WWTP.

### **Wellhead Protection Program**

There is a Public Water Supply (PWS) well located approximately 2,730 feet northwest to the outfall that has a depth of approximately 600 feet with a sanitary seal at 55 feet and a screen from 300 to 600 feet. A second well is located 2070 feet to the southeast to the outfall that has a depth of approximately 720 with a sanitary seal at 52 feet and a screen from 200 to 560 feet. The outfall is located in the Drinking Water Protection Area of the wells, which is defined by a 3,000-foot radius around a PWS well. The recent chemical history of the well reports that the wells have not had an exceedance or detection greater than or equal to 50% of the maximum contaminant level (MCL) in the last 10 years. The outfall is not located in a Wellhead Protection Area (WHPA), which represents an approximate 10-year capture zone of a well. The

wells are at minimal risk based on the chemical history and the well depths, distance and direction.

**Schedule of Compliance:**

SOC – Schedule of Compliance Table

Item #	Description	Due Date
1	The Permittee shall submit two copies (one hard copy and one electronic copy) of an updated Operations and Maintenance (O&M) Manual for review and approval by the Division. The O&M Manual shall follow the Division's guidance document, WTS2 Minimum Information Required for an Operation and Maintenance Manual, and be prepared and wet stamped by a licensed, qualified Nevada professional engineer (P.E.).	9/12/2029

**Deliverable Schedule:**

DLV– Deliverable Schedule for Reports, Plans, and Other Submittals

Item #	Description	Interval	First Scheduled Due Date
1	Quarterly Report	Quarterly	7/28/2026
2	Annual Report	Annually	1/28/2027

**Procedures for Public Comment:**

The Notice of the Division's intent to issue a permit authorizing the facility to discharge to groundwater of the State of Nevada subject to the conditions contained within the permit, is being mailed to interested persons on our mailing list and will be posted on our website at <https://ndep.nv.gov/posts>. Anyone wishing to comment on the proposed permit can do so in writing until 5:00 P.M. **6/9/2026**, a period of 30 days following the date of the public notice. The comment period can be extended at the discretion of the Administrator.

A public hearing on the proposed determination can be requested by the applicant, any affected State, any affected interstate agency, the Regional Administrator of EPA Region IX or any interested agency, person or group of persons. The request must be filed within the comment period and must indicate the interest of the person filing the request and the reasons why a hearing is warranted. Any public hearing determined by the Administrator to be held must be conducted in the geographical area of the proposed discharge or any other area the Administrator determined to be appropriate. All public hearings must be conducted in accordance with NAC 445A.238.

The final determination of the Administrator may be appealed to the State Environmental Commission pursuant to NRS 445A.605.

**Proposed Determination:**

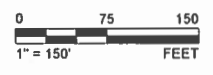
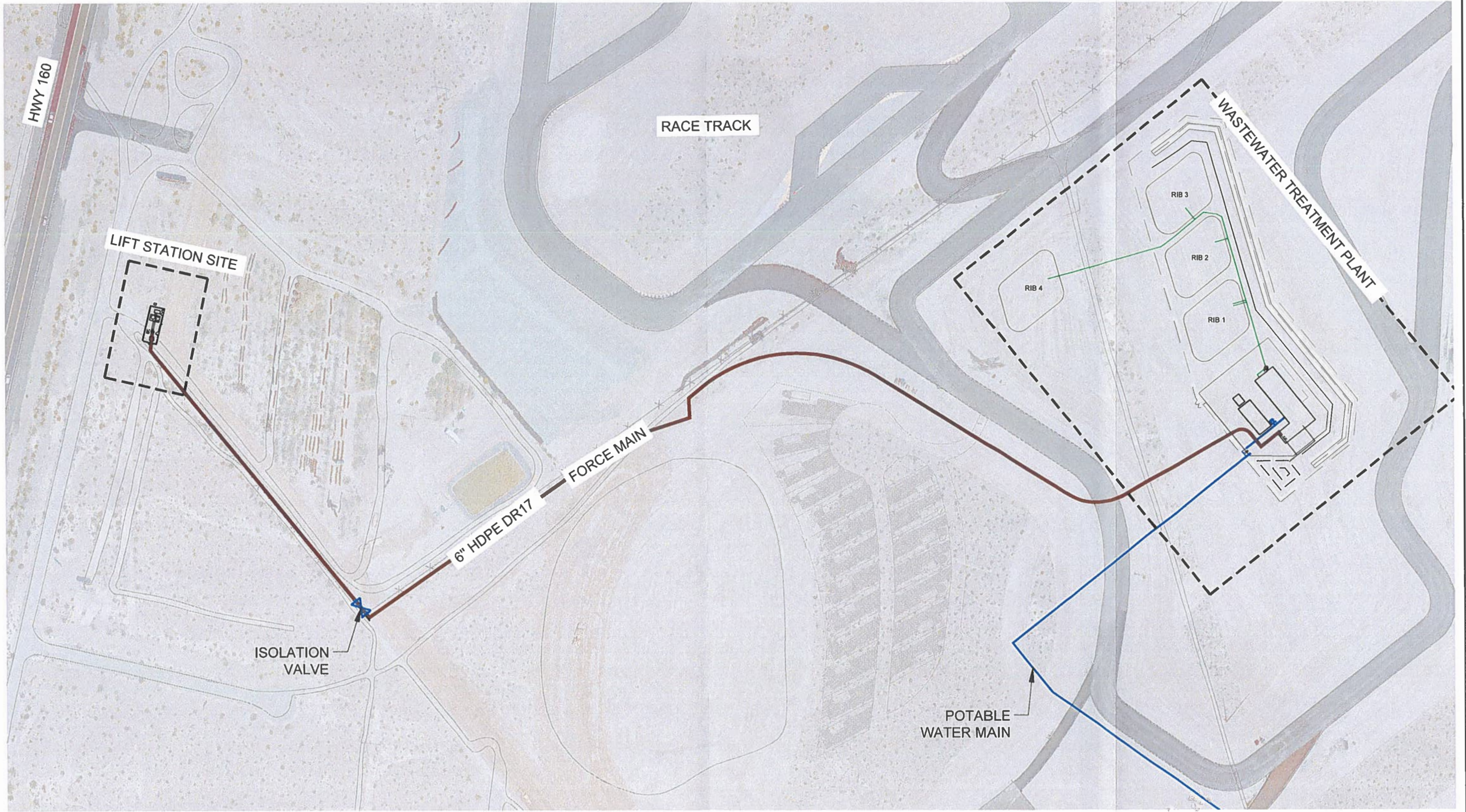
The Division has made the tentative determination to issue/re-issue the proposed 5-year permit.

Prepared by: **Melissa Hanson**

Date: **5/1/2026**

Title: **Staff II Engineer**

Path: \\nmo\data\spring mountain motorsports\mch\1771852\construction\services\6\_in\_manual\sewage\_system\cas-figures\1 | File Name: "Overall Wastewater Map.dwg" | Last Edited By: jhou | Date: 2018-11-03 | Time: 5:09:31 PM | Printed By: jhou | Date: 2018-11-03 | Time: 10:08 PM



CLIENT  
**DOUBLE M CONSTRUCTION**  
 C/O SPRING MOUNTAIN RACEWAY, LLC

CONSULTANT	YYYY-MM-DD	2018-11-05
	DESIGNED	MPB
	PREPARED	JH
	REVIEWED	MPB
	APPROVED	MPB

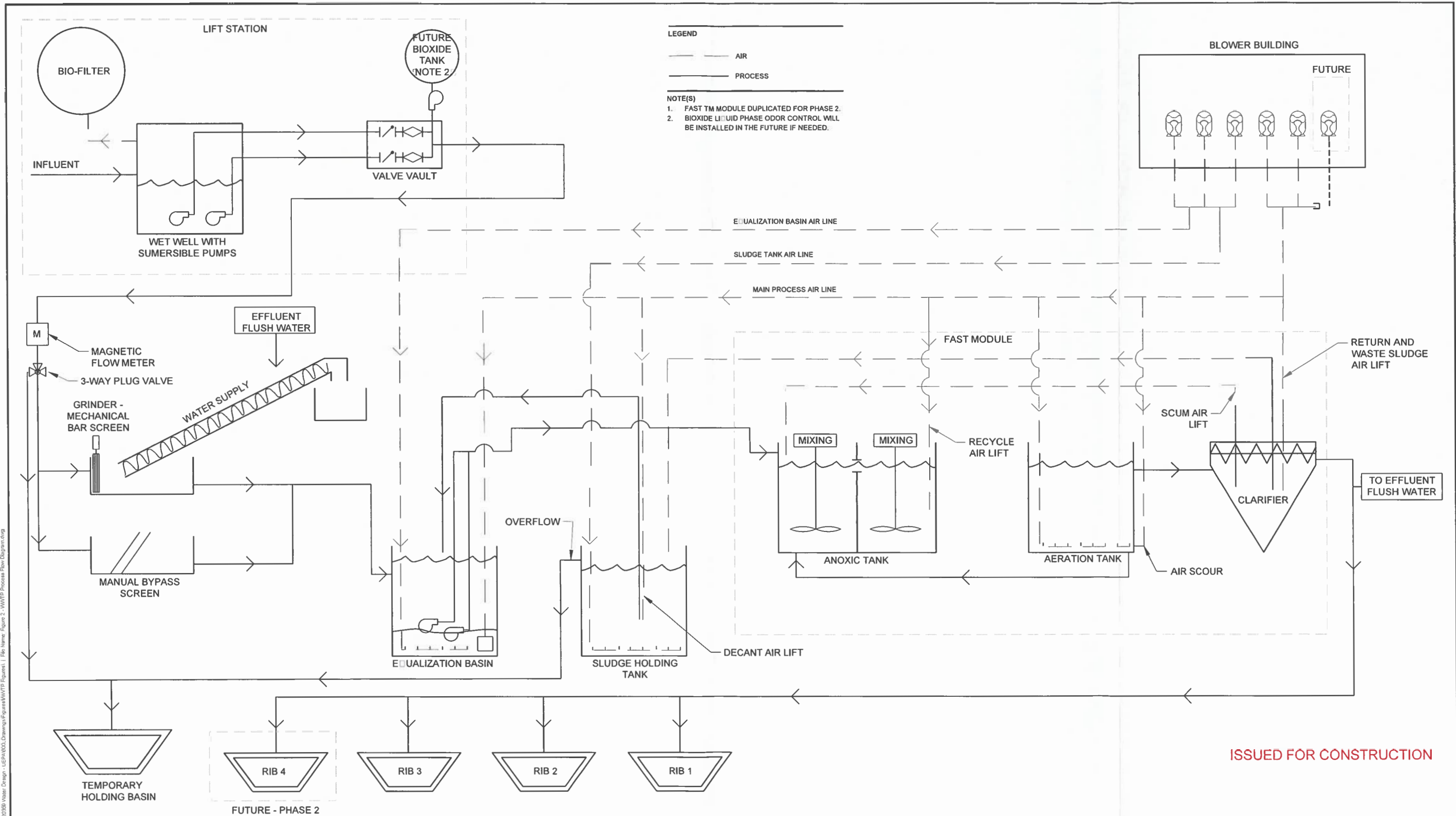


PROJECT  
**WASTEWATER SYSTEM**  
 SPRING MOUNTAIN MOTORSPORTS RANCH  
 PAHRUMP, NEVADA

TITLE  
**OVERALL WASTEWATER MAP**

PROJECT NO.	CONTROL	REV.	FIGURE
1771852		0	1

1" = 150' THIS MEASUREMENT DOES NOT WATER WHAT IS SHOWN THE SHEET HAS BEEN ADJUSTED FROM PLAN IS



ISSUED FOR CONSTRUCTION

File Name: Figure 2 - WWT Process Flow Diagram.dwg  
 User: JG  
 Date: 2016-04-22  
 Project: Spring Mountain Motorsports Ranch  
 Drawing: WWT Process Flow Diagram

Rev.	YYYY-MM-DD	DESCRIPTION	EMC	EJN	JC	MPB
0	2016-04-22	ISSUED FOR CONSTRUCTION				
			PREPARED	DESIGN	REVIEW	APPROVED

CLIENT  
**DOUBLE M CONSTRUCTION**  
 C/O SPRING MOUNTAIN RACEWAY, LLC

CONSULTANT

**Golder Associates**

RENO OPERATIONS  
 595 DOUBLE EAGLE COURT  
 SUITE 1000  
 USA  
 775-828-9604  
 www.golder.com

PROJECT  
**WASTEWATER DESIGN**  
 SPRING MOUNTAIN MOTORSPORTS RANCH  
 PAHRUMP, NEVADA

TITLE  
**WWT PROCESS FLOW DIAGRAM**

PROJECT No. 1520359 CONTROL Rev. 0 2 of 2 FIGURE 2