

Appendix 2

County Atlas & County Solid Waste Profiles (Current as of June 2022)

This page is intentionally left blank

Carson City

Local Solid Waste Planning:

Responsible Agency: Carson City Environmental Health Department

Plan Date: August 25, 2014

Population and Solid Waste Trends:

	2012	2013	2014	2015	2016	2017	2018	2019	2020	2021
Population*	55,441	54,668	53,969	54,273	55,182	55,438	56,057	56,151	56,434	57,073
MSW Disposed of in County (tons)	64,541	66,294	68,439	67,665	90,114	90,501	94,553	98,120	101,320	106,191
Industrial/Special Waste Disposed in County (tons)	68,262	65,601	98,979	107,077	138,649	133,536	128,295	137,913	200,161	135,343
Imported MSW Disposed (tons)	8	1	11	13	8,198	20,066	17,022	32,659	42,279	42,293
MSW Generated in County (Tons) - Excluding Recycled MSW	55,334	57,918	59,647	58,531	61,207	65,254	67,524	69,268	81,437	82,826
MSW Recycled (tons)	18,392	22,432	24,621	23,281	22,710	23,751	22,411	37,102	39,058	19,902
Total MSW Generated per Capita (lbs./day/person)	7.29	8.05	8.56	8.26	8.33	8.80	8.79	10.38	11.70	9.86

*Population data from NV State Demographer

Active Municipal Solid Waste Landfills:

Site Name	Owner/Operator	Landfill Class	Tons/Day (5-Year Average)	Estimated Closure
Carson City Landfill	Carson City	I and III	756.30	2048

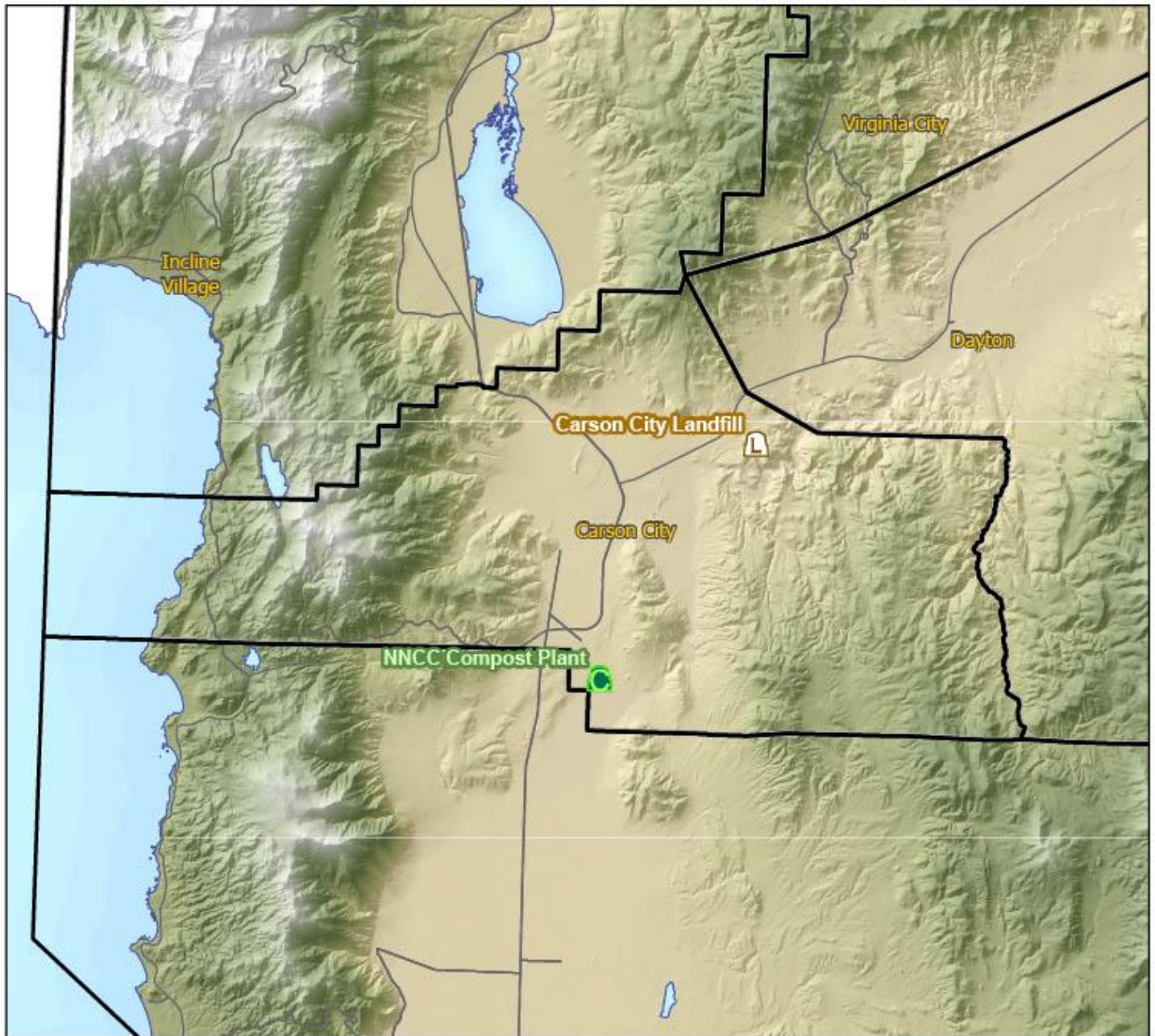
Solid Waste/Recyclables Collection Services:

Capital Sanitation (Waste Management) provides weekly MSW collection and bi-weekly curbside recycling. The municipality of Carson City also has bi-weekly organics collection. Commercial MSW and recyclable collection options include front-end loader (FEL), roll off, and bale route. EcoCenter MRF processes the collected single stream recycling.

Household Hazardous Waste Collection:

Customers are referred to local business partners for disposal of HHW. Historically, Waste Management (WM) has sponsored community drop off events and voucher programs. Currently, WM partners with GrayMar to offer reduced disposal rates for WM customers. HHW is also accepted at the Carson City Landfill by appointment on Thursdays.

Carson City Solid Waste Facilities



0 1 2 4 6 8 Miles

Legend

- | | | |
|---------------------------|----------------------------|-------------------|
| Landfills Class I | Landfills Class II and III | Compost Facility |
| Landfills Class II | Proposed Landfills | County Boundaries |
| Landfills Class III | Transfer Stations | Major Roads |
| Landfills Class I and III | Waste Bin | Lakes |

Churchill County

Local Solid Waste Planning:

Responsible Agency: Churchill County

Plan Date: March 30, 2015

Population and Solid Waste Trends:

	2012	2013	2014	2015	2016	2017	2018	2019	2020	2021
Population	25,238	25,322	25,103	25,126	25,266	25,387	25,628	25,832	26,202	26,310
MSW Disposed of in County (tons)	18,653	22,207	22,270	22,573	26,895	31,252	40,845	36,451	49,087	49,088
Industrial/Special Waste Disposed in County (tons)	4,456	6,977	18,039	44,227	62,775	59,523	53,364	50,983	60,637	70,527
Imported MSW Disposed (tons)	0	0	0	0	0	0	0	0	0	0
MSW Generated in County (Tons) - Excluding Recycled MSW	18,653	22,210	22,272	22,574	26,896	31,257	40,863	36,468	49,090	49,091
MSW Recycled (tons)	n/a	n/a	n/a	n/a	n/a	n/a	n/a	n/a	n/a	n/a
Total MSW Generated per Capita (lbs./day/person)	4.05	4.81	4.86	4.92	5.83	6.75	8.74	7.74	10.27	10.22

*Population data from NV State Demographer

Active Municipal Solid Waste Landfills:

Site Name	Owner/Operator	Landfill Class	Tons/Day (5-Year Average)	Estimated Closure
Russell Pass Landfill	City of Fallon	I	271.96	2103

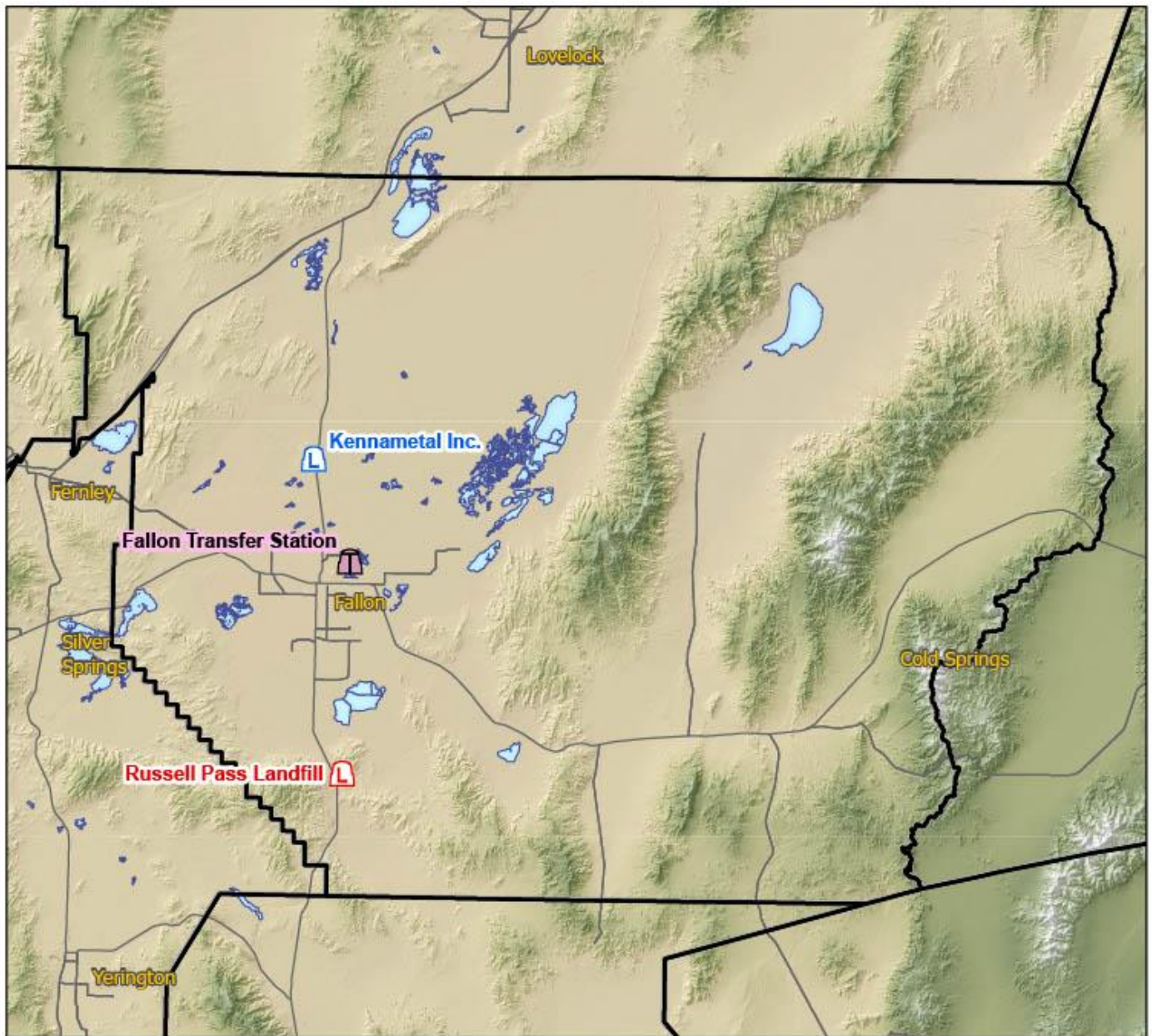
Solid Waste/Recyclables Collection Services:

Haulers include Olcese Waste Services and Tumbleweed Garbage Disposal with weekly MSW curbside pickup. The City of Fallon provides weekly MSW pickup within the city limits. Waste Management operates a transfer station in Fallon. Drop off recycling bins are located at that transfer station.

Household Hazardous Waste Collection:

Russell Pass Landfill will accept HHW with advanced notification. The landfill has a dedicated area to household waste oil and batteries.

Churchill County Solid Waste Facilities



0 6.5 13 19.5 26 Miles

Legend

- | | | |
|---------------------------|----------------------------|-------------------|
| Landfills Class I | Landfills Class II and III | Compost Facility |
| Landfills Class II | Proposed Landfills | County Boundaries |
| Landfills Class III | Transfer Stations | Major Roads |
| Landfills Class I and III | Waste Bin | Lakes |

Clark County

Local Solid Waste Planning:

Responsible Agency: Southern Nevada Health District

Plan Date: May 23, 2013

Population and Solid Waste Trends:

	2012	2013	2014	2015	2016	2017	2018	2019	2020	2021
Population	1,988,195	2,031,723	2,069,450	2,118,353	2,166,181	2,193,818	2,251,175	2,293,391	2,320,107	2,320,551
MSW Disposed of in County (tons)	1,878,966	2,104,157	2,163,746	2,228,899	2,273,052	2,437,819	2,609,228	2,620,385	2,416,047	2,593,185
Industrial/Special Waste Disposed in County (tons)	832,956	702,429	985,710	1,824,239	900,861	1,259,174	200,364	492,552	501,600	485,217
Imported MSW Disposed (tons)	0	0	0	0	0	0	0	0	0	0
MSW Generated in County (Tons) - Excluding Recycled MSW	1,902,852	2,129,312	2,189,131	2,254,580	2,299,271	2,506,964	2,637,988	2,677,304	2,455,023	2,634,034
MSW Recycled (tons)	723,396	599,632	566,332	486,237	592,645	622,994	643,305	657,339	746,059	803,151
Total MSW Generated per Capita (lbs./day/person)	7.24	7.36	7.30	7.09	7.32	7.82	7.99	7.97	7.56	8.12

*Population data from NV State Demographer

Active Municipal Solid Waste Landfills:

Site Name	Owner/Operator	Landfill Class	Tons/Day (5-Year Average)	Estimated Closure
Apex Regional Landfill	Republic Services	I	7456.75	2275
Boulder City Landfill	Boulder City Disposal	I	73.96	2192
Laughlin Landfill	Republic Services	I	66.4	2057

Solid Waste/Recyclables Collection Services:

Boulder City: Boulder City Disposal provides weekly MSW pickup and curbside recycling. Curbside recycling collects paper, plastic, metal, and glass. A recycling buy-back accepts collects aluminum cans, plastics 1 and 2, cardboard, mixed paper, newspapers, and telephone books.

Las Vegas: Republic Services provides weekly MSW pickup and curbside recycling. Curbside recycling collects paper, cardboard, metal cans, plastic bottles, and jugs. There is a mail-back e-waste and battery recycling program.

Laughlin: Republic Services provides weekly MSW pickup and curbside recycling.

Mesquite: Virgin Valley Disposal provides weekly MSW pickup as well as curbside recycling once per month. Curbside recycling collects aluminum/metal, paper, plastic, and cardboard. There are 24/7 recycling drop off points at Smiths and Walmart Parking lots, which will take aluminum cans, plastic milk jugs/ plastic water bottles, newspaper and corrugated cardboard.

Rural Clark County: Outlying rural areas of Clark County are serviced by Republic Services. Outlying areas also have access to convenience centers (Searchlight – 3 days/week; Moapa – 1x/month; Mt Charleston – 1x/month; Sandy Valley – 1x/month).

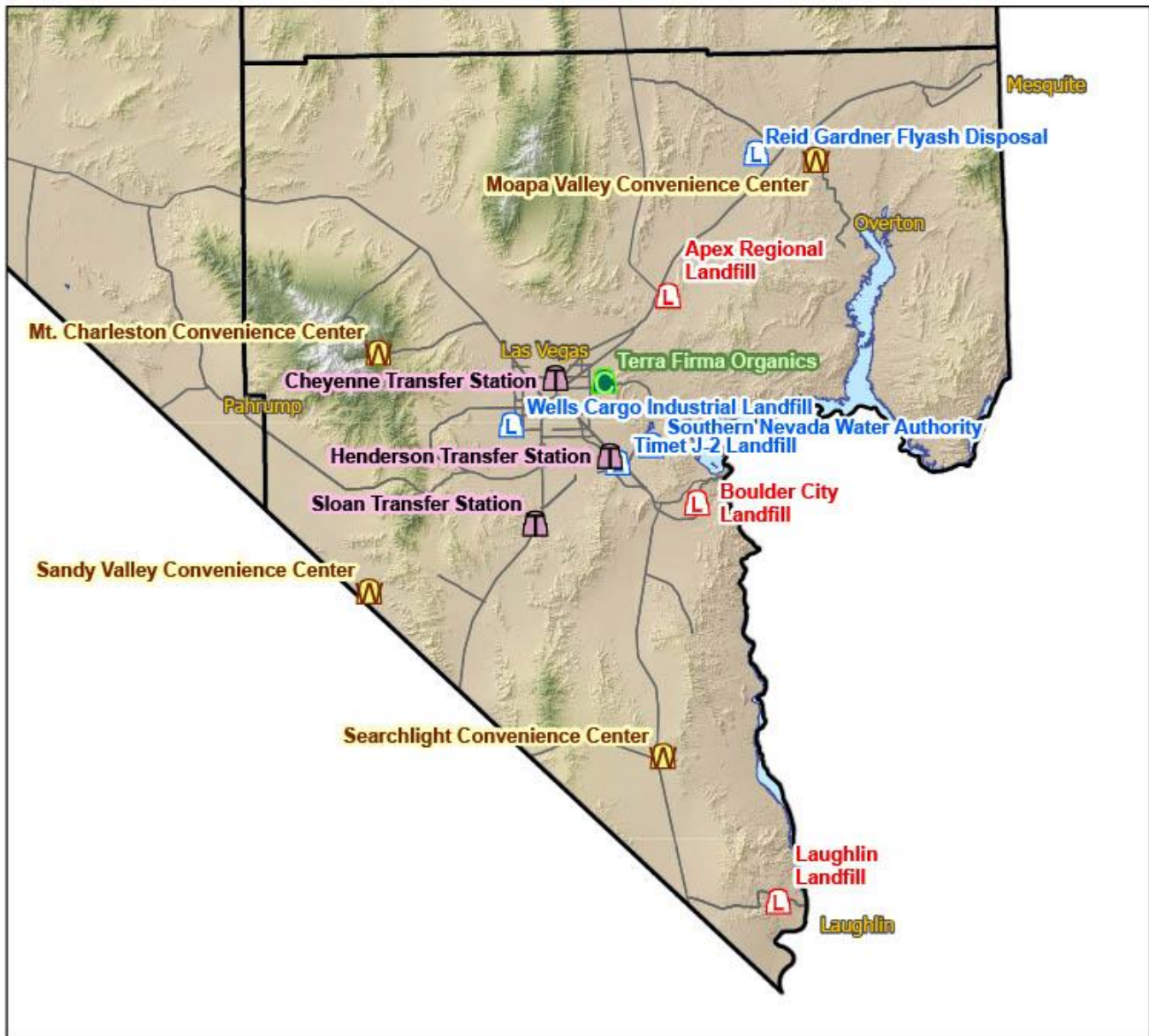
Household Hazardous Waste Collection:

Boulder City: Hazardous waste drop off at the Boulder City Landfill offered for paint, pesticides, oven cleaners, pool chemicals, other chemicals, solvents, aerosol cans with leftover paint, pesticides, or oven cleaner.

Las Vegas/Henderson Area: Republic Services maintains a HHW collection service at two locations – one in North Las Vegas and another in Henderson. The locations are open Wednesday to Saturday, but with a rotating schedule between the two locations. Additionally, there is a pre-paid sharps mail-back program.

Mesquite: Residents can take their HHW to the City of Mesquite Landfill.

Clark County Solid Waste Facilities



0 5 10 20 30 40 Miles

Legend

- | | | |
|---------------------------|----------------------------|-------------------|
| Landfills Class I | Landfills Class II and III | Compost Facility |
| Landfills Class II | Proposed Landfills | County Boundaries |
| Landfills Class III | Transfer Stations | Major Roads |
| Landfills Class I and III | Waste Bin | Lakes |

Douglas County

Local Solid Waste Planning:

Responsible Agency: Douglas County

Plan Date: April 9, 2014

Population and Solid Waste Trends:

	2012	2013	2014	2015	2016	2017	2018	2019	2020	2021
Population	48,015	48,478	48,553	48,223	48,235	48,300	49,070	49,537	49,082	49,661
MSW Disposed of in County (tons)	0	0	0	0	0	0	0	0	0	0
Industrial/Special Waste Disposed in County (tons)	0	0	0	0	0	0	0	0	0	0
Imported MSW Disposed (tons)	0	0	0	0	0	0	0	0	0	0
MSW Generated in County (Tons) - <i>Excluding Recycled MSW</i>	36,623	36,040	37,513	39,060	39,099	33,819	31,547	36,380	39,392	41,207
MSW Recycled (tons)	43,941	48,425	46,831	64,574	38,541	36,058	62,877	42,851	41,483	40,683
Total MSW Generated per Capita (lbs./day/person)	9.19	9.55	9.52	11.78	8.82	7.93	10.54	8.76	9.03	9.04

*Population data from NV State Demographer

Active Municipal Solid Waste Landfills:

Site Name	Owner/Operator	Landfill Class	Tons/Day (5-Year Average)	Estimated Closure
None in this county	-	-	-	-

Solid Waste/Recyclables Collection Services:

Douglas County: Douglas Disposal provides weekly collection of MSW.

Gardnerville: The Town of Gardnerville provides weekly collection of MSW.

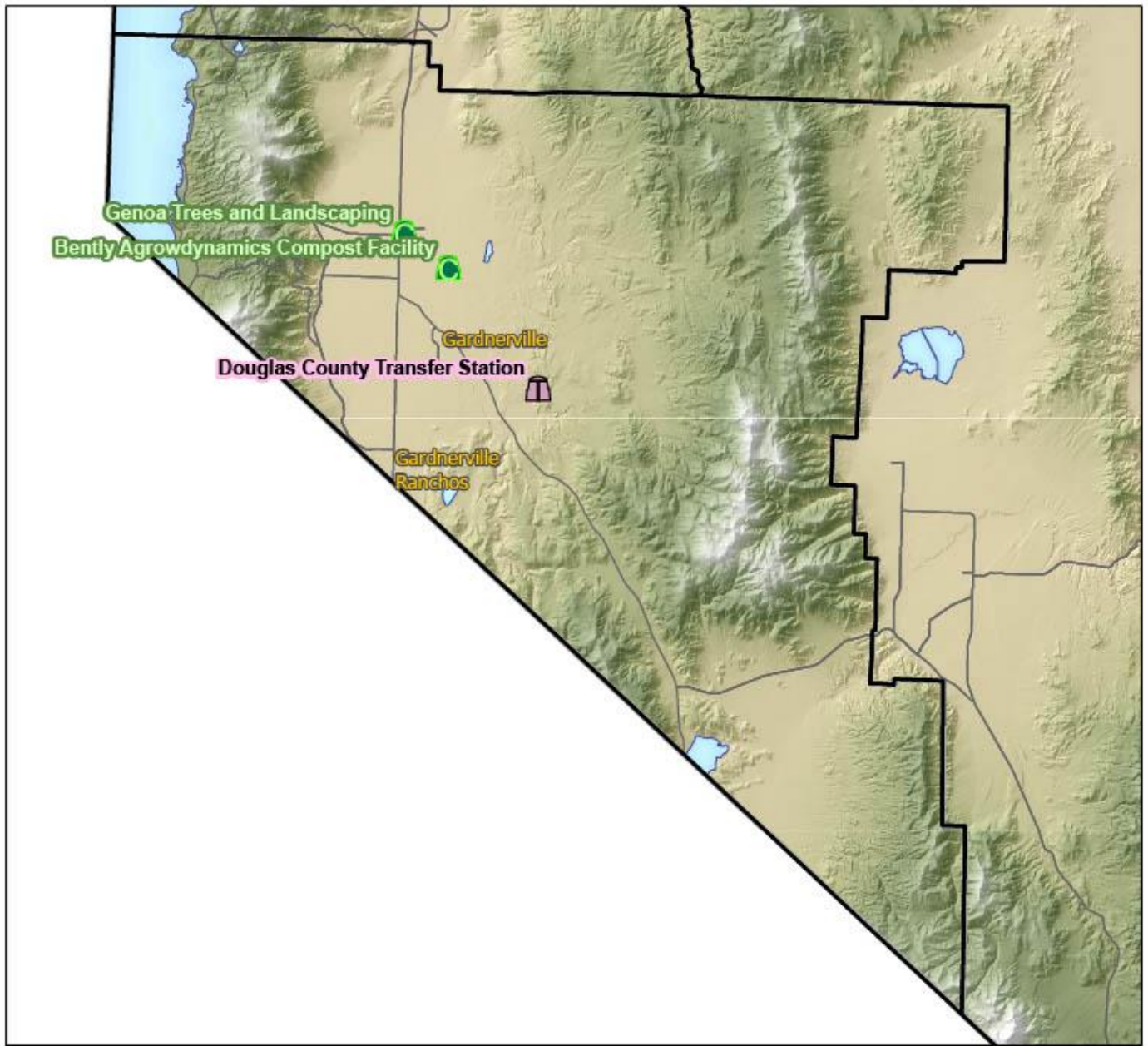
Minden: The Town of Minden provides weekly collection of MSW.

Recyclable materials (paper, metals, plastic, glass, and textiles) are accepted at collection stations throughout the county.

Household Hazardous Waste Collection:

HHW may be dropped off at the Douglas Transfer Station by appointment.

Douglas County Solid Waste Facilities



Legend

- | | | |
|---------------------------|----------------------------|-------------------|
| Landfills Class I | Landfills Class II and III | Compost Facility |
| Landfills Class II | Proposed Landfills | County Boundaries |
| Landfills Class III | Transfer Stations | Major Roads |
| Landfills Class I and III | Waste Bin | Lakes |

Elko County

Local Solid Waste Planning:

Responsible Agency: Elko County

Plan Date: January 11, 2017

Population and Solid Waste Trends:

	2012	2013	2014	2015	2016	2017	2018	2019	2020	2021
Population	51,771	53,384	53,358	53,551	53,997	53,287	54,326	55,116	55,435	54,546
MSW Disposed of in County (tons)	70,089	66,731	65,171	52,161	54,593	53,152	55,764	57,131	58,537	58,219
Industrial/Special Waste Disposed in County (tons)	15,388	14,413	8,982	18,008	17,308	17,856	20,367	19,932	17,198	21,081
Imported MSW Disposed (tons)	1,233	1,165	1,062	1,139	1,070	1,135	1,077	1,110	1,083	1,161
MSW Generated in County (Tons) - Excluding Recycled MSW	68,576	65,248	63,659	51,433	52,289	53,452	56,414	57,585	58,676	59,132
MSW Recycled (tons)	3,688	2,219	4,019	922	3,051	3,839	2,268	63,223	5,191	1,892
Total MSW Generated per Capita (lbs./day/person)	7.65	6.92	6.95	5.36	5.62	5.89	5.92	12.01	6.31	6.13

*Population data from NV State Demographer

Active Municipal Solid Waste Landfills:

Site Name	Owner/Operator	Landfill Class	Tons/Day (5-Year Average)	Estimated Closure
Elko City Landfill	City of Elko	I	186.07	2102
West Wendover City Landfill	City of West Wendover	I and III	24.78	2032

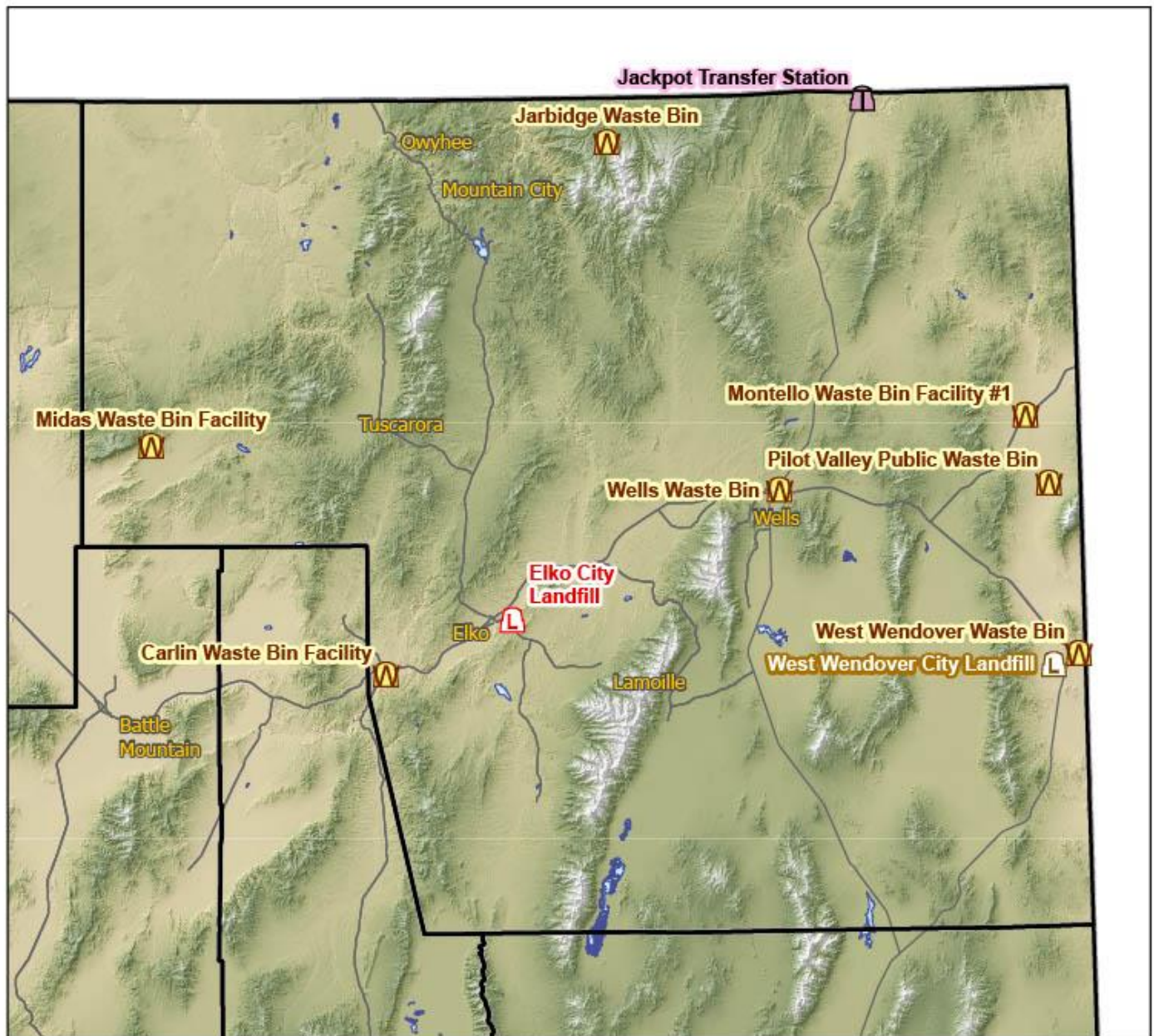
Solid Waste/Recyclables Collection Services:

Elko Sanitation provides weekly MSW pickup and curbside recycling. Its commingled (single-stream) recycling service collects aluminum, steel/tin, empty aerosol cans, boxes, cardboard, paperboard, paper style milk cartons, plastic bottle and jugs (plastics 1-7), and plastic food tubs.

Household Hazardous Waste Collection:

HHW (such as fluorescent light bulbs, used automotive oils, used antifreeze, used gasoline, oil base paints, insecticides, and pesticides) are only accepted from non-commercial customers and are available by appointment.

Elko County Solid Waste Facilities



0 10 20 30 40 Miles



Legend

- | | | |
|---------------------------|----------------------------|-------------------|
| Landfills Class I | Landfills Class II and III | Compost Facility |
| Landfills Class II | Proposed Landfills | County Boundaries |
| Landfills Class III | Transfer Stations | Major Roads |
| Landfills Class I and III | Waste Bin | Lakes |

Esmeralda County

Local Solid Waste Planning:

Responsible Agency: Esmeralda County

Plan Date: May 19, 2017

Population and Solid Waste Trends:

	2012	2013	2014	2015	2016	2017	2018	2019	2020	2021
Population	860	858	926	923	964	970	969	982	999	1,000
MSW Disposed of in County (tons)	1,211	1,377	1,118	883	866	3,843	1,037	1,187	1,305	1,255
Industrial/Special Waste Disposed in County (tons)	95	226	17	215	762	717	628	498	635	405
Imported MSW Disposed (tons)	0	0	0	0	0	0	0	0	0	0
MSW Generated in County (Tons) - Excluding Recycled MSW	1,211	1,377	1,118	883	866	3,843	1,037	1,187	1,305	1,255
MSW Recycled (tons)	n/a	n/a	n/a	n/a	n/a	n/a	n/a	n/a	n/a	n/a
Total MSW Generated per Capita (lbs./day/person)	7.72	8.79	6.62	5.24	4.92	21.71	5.86	6.63	7.16	6.88

*Population data from NV State Demographer

Active Municipal Solid Waste Landfills:

Site Name	Owner/Operator	Landfill Class	Tons/Day (5-Year Average)	Estimated Closure
Goldfield Sanitary LF	Esmeralda County	II	6.31	2138

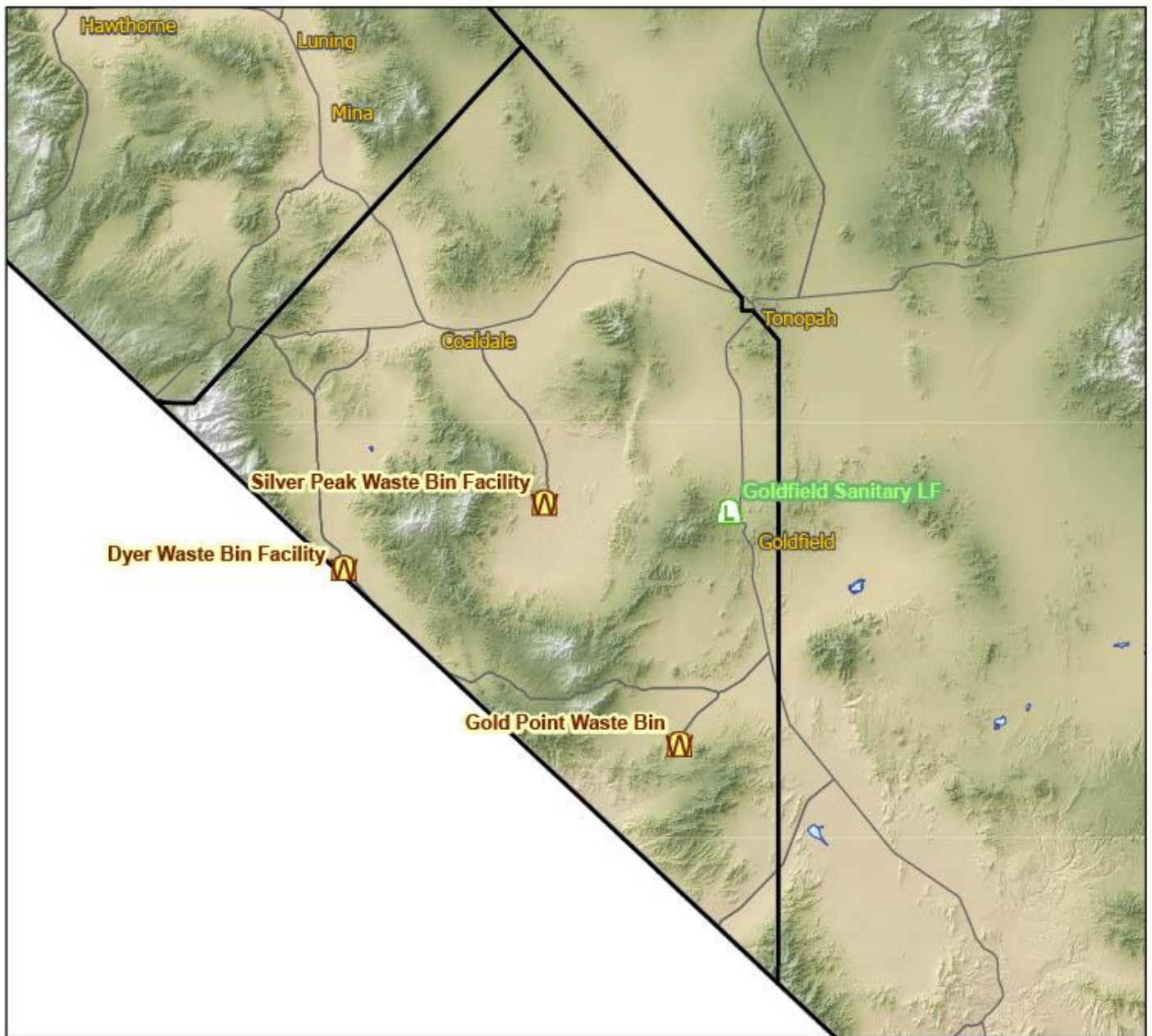
Solid Waste/Recyclables Collection Services:

There are no waste haulers and no curbside recycling. MSW can be taken to Goldfield Sanitary Landfill. Metal Collection is done by SA Recycling when 500 tons of metal is available, SA also takes batteries.

Household Hazardous Waste Collection:

Used oil recycling is offered with 3 used oil collection sites. The oil is used in waste oil heaters. No other HHW services are offered.

Esmeralda County Solid Waste Facilities



0 9.5 19 28.5 38 Miles

Legend

- | | | |
|---------------------------|----------------------------|-------------------|
| Landfills Class I | Landfills Class II and III | Compost Facility |
| Landfills Class II | Proposed Landfills | County Boundaries |
| Landfills Class III | Transfer Stations | Major Roads |
| Landfills Class I and III | Waste Bin | Lakes |

Eureka County

Local Solid Waste Planning:

Responsible Agency: Eureka County

Plan Date: November 8, 2017

Population and Solid Waste Trends:

	2012	2013	2014	2015	2016	2017	2018	2019	2020	2021
Population	2,011	2,024	1,903	1,862	1,959	1,932	1,951	1,955	1,936	1,898
MSW Disposed of in County (tons)	1,007	1,108	1,191	1,089	1,084	950	725	868	1,369	1,356
Industrial/Special Waste Disposed in County (tons)	29,217	8,188	11,339	3,964	7,533	8,341	12,262	13,188	10,793	12,341
Imported MSW Disposed (tons)	0	0	0	0	0	0	0	0	0	0
MSW Generated in County (Tons) - Excluding Recycled MSW	1,007	1,108	1,191	1,089	1,084	950	725	868	1,369	1,356
MSW Recycled (tons)	n/a	n/a	n/a	n/a	n/a	n/a	n/a	n/a	n/a	n/a
Total MSW Generated per Capita (lbs./day/person)	2.74	3.00	3.43	3.21	3.03	2.69	2.04	2.43	3.87	3.92

*Population data from NV State Demographer

Active Municipal Solid Waste Landfills:

Site Name	Owner/Operator	Landfill Class	Tons/Day (5-Year Average)	Estimated Closure
Eureka Sanitary LF	Eureka County	II	9.66	2141

Solid Waste/Recyclables Collection Services:

Olcese Waste Services provides weekly MSW pickup. Recyclable materials can be dropped off at Eureka Landfill and Crescent Valley Transfer Station.

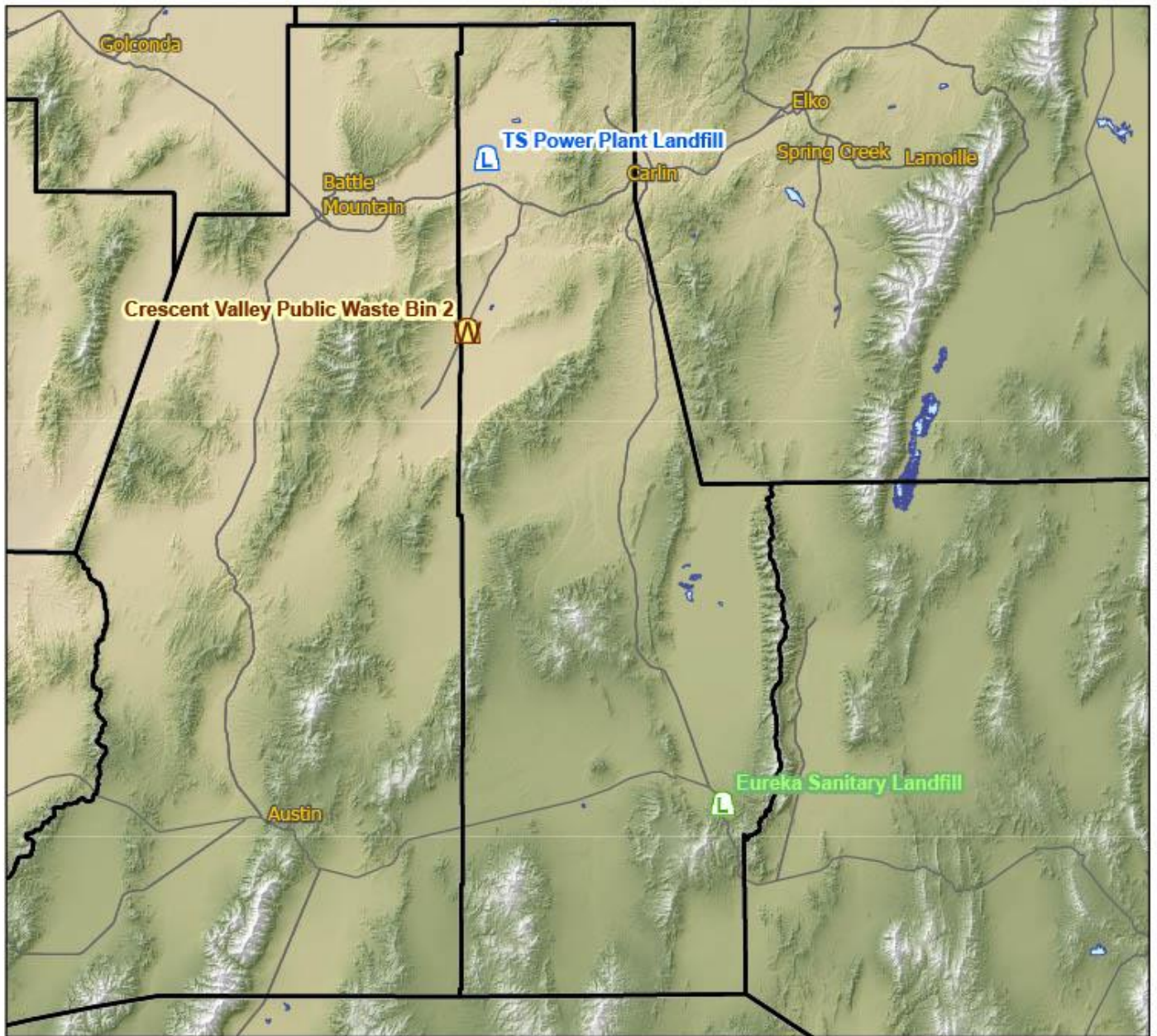
Eureka Landfill Recycling Drop Off: white goods, refrigerators/freezers, scrap metal, camper and car bodies, batteries, newspaper/magazines, cardboard

Crescent Valley Transfer Station Recycling Drop Off: white goods, refrigerators/freezers, small quantity scrap metal, batteries

Household Hazardous Waste Collection:

No services provided.

Eureka County Solid Waste Facilities



0 10 20 30 40 Miles

Legend

- | | | |
|---------------------------|----------------------------|-------------------|
| Landfills Class I | Landfills Class II and III | Compost Facility |
| Landfills Class II | Proposed Landfills | County Boundaries |
| Landfills Class III | Transfer Stations | Major Roads |
| Landfills Class I and III | Waste Bin | Lakes |

Humboldt County

Local Solid Waste Planning:

Responsible Agency: Humboldt County

Plan Date: April 25, 2016

Population and Solid Waste Trends:

	2012	2013	2014	2015	2016	2017	2018	2019	2020	2021
Population	17,384	17,457	17,388	17,057	16,853	16,978	16,989	17,079	17,064	17,202
MSW Disposed of in County (tons)	19,746	21,139	21,173	21,818	21,284	29,489	26,969	28,528	26,911	29,105
Industrial/Special Waste Disposed in County (tons)	56,997	131,850	138,050	116,266	103,354	170,930	99,531	78,290	45,075	76,116
Imported MSW Disposed (tons)	0	0	0	0	0	0	0	0	0	14
MSW Generated in County (Tons) - Excluding Recycled MSW	19,746	21,139	21,173	21,407	21,116	29,177	26,347	28,074	26,603	28,568
MSW Recycled (tons)	n/a	n/a	n/a	n/a	n/a	n/a	n/a	n/a	n/a	n/a
Total MSW Generated per Capita (lbs./day/person)	6.22	6.64	6.67	6.88	6.87	9.42	8.50	9.01	8.54	9.10

*Population data from NV State Demographer

Active Municipal Solid Waste Landfills:

Site Name	Owner/Operator	Landfill Class	Tons/Day (5-Year Average)	Estimated Closure
Humboldt County Regional Landfill	Humboldt County	I	87.48	2039

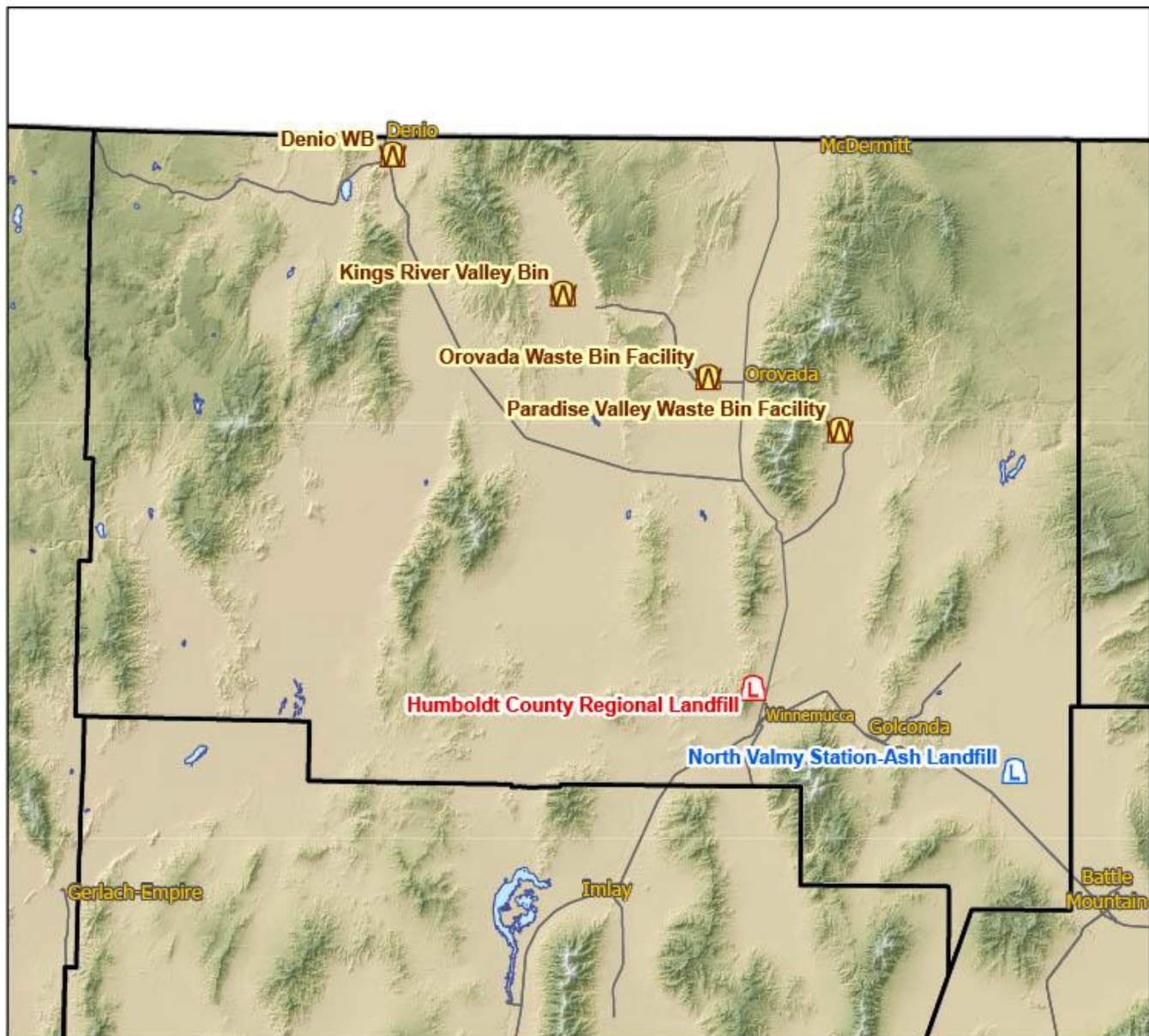
Solid Waste/Recyclables Collection Services:

The waste haulers include Hoss Disposal and Desert Disposal. Except for scrap metal, recycling at the Humboldt County Regional Landfill was suspended in 2019.

Household Hazardous Waste Collection:

Some local businesses collect HHW. The Humboldt County Regional Landfill has collection of used motor oils and batteries.

Humboldt County Solid Waste Facilities



0 10 20 30 40 Miles

Legend

- | | | |
|---------------------------|----------------------------|-------------------|
| Landfills Class I | Landfills Class II and III | Compost Facility |
| Landfills Class II | Proposed Landfills | County Boundaries |
| Landfills Class III | Transfer Stations | Major Roads |
| Landfills Class I and III | Waste Bin | Lakes |

Lander County

Local Solid Waste Planning:

Responsible Agency: Lander County

Plan Date: April 16, 2015

Population and Solid Waste Trends:

	2012	2013	2014	2015	2016	2017	2018	2019	2020	2021
Population	6,221	6,343	6,560	6,247	6,257	6,200	6,065	6,109	6,324	6,195
MSW Disposed of in County (tons)	1,967	2,036	1,887	1,808	1,946	2,342	2,446	2,243	2,186	2,590
Industrial/Special Waste Disposed in County (tons)	27,667	22,774	21,561	26,972	22,963	111,655	34,267	29,267	32,316	38,562
Imported MSW Disposed (tons)	0	0	0	0	0	0	0	0	0	0
MSW Generated in County (Tons) - <i>Excluding Recycled MSW</i>	1,967	2,036	1,887	1,808	1,946	2,353	2,446	2,243	2,186	2,590
MSW Recycled (tons)	n/a	n/a	n/a	n/a	n/a	n/a	n/a	n/a	n/a	n/a
Total MSW Generated per Capita (lbs./day/person)	1.73	1.76	1.58	1.59	1.70	2.08	2.21	2.01	1.89	2.29

*Population data from NV State Demographer

Active Municipal Solid Waste Landfills:

Site Name	Owner/Operator	Landfill Class	Tons/Day (5-Year Average)	Estimated Closure
Battle Mountain Landfill	Lander County	II	141.3	2101

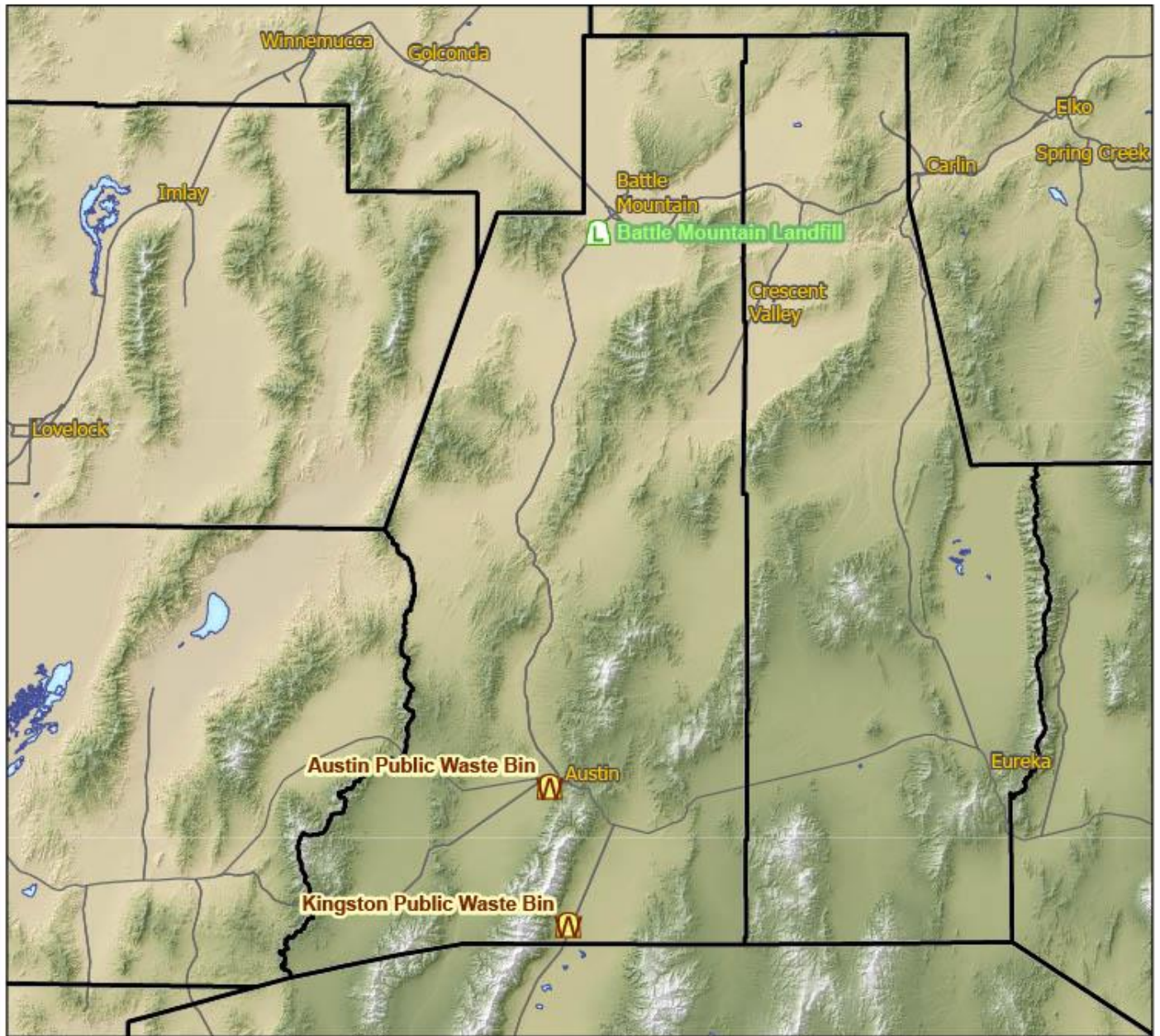
Solid Waste/Recyclables Collection Services:

The waste hauler is Hoss Disposal, which provides weekly MSW pickup. Due to a loss of markets for recycled materials, recycling drop off facilities are closed until further notice. However, scrap metal is collected and transported approximately twice a year.

Household Hazardous Waste Collection:

No services provided.

Lander County Solid Waste Facilities



Legend

- | | | |
|---------------------------|----------------------------|-------------------|
| Landfills Class I | Landfills Class II and III | Compost Facility |
| Landfills Class II | Proposed Landfills | County Boundaries |
| Landfills Class III | Transfer Stations | Major Roads |
| Landfills Class I and III | Waste Bin | Lakes |



0 5 10 20 30 40 Miles

Lincoln County

Local Solid Waste Planning:

Responsible Agency: Lincoln County

Plan Date: April 4, 2017

Population and Solid Waste Trends:

	2012	2013	2014	2015	2016	2017	2018	2019	2020	2021
Population	5,100	5,020	5,004	5,088	5,057	5,170	5,255	5,264	5,293	5,188
MSW Disposed of in County (tons)	29,842	31,135	31,168	31,519	32,260	74,291	33,693	61,809	44,350	46,458
Industrial/Special Waste Disposed in County (tons)	285,516	355,967	344,944	388,634	436,839	534,849	585,304	598,203	576,102	649,309
Imported MSW Disposed (tons)	1,190	1,187	1,338	1,329	1,460	1,631	1,574	3,622	2,984	5,896
MSW Generated in County (Tons) - Excluding Recycled MSW	4,766	4,837	4,445	4,508	4,580	5,146	4,933	4,890	5,375	5,609
MSW Recycled (tons)	n/a	n/a	n/a	n/a	n/a	n/a	n/a	n/a	n/a	n/a
Total MSW Generated per Capita (lbs./day/person)	5.12	5.28	4.87	4.85	4.96	5.45	5.14	5.09	5.56	5.92

*Population data from NV State Demographer

Active Municipal Solid Waste Landfills:

Site Name	Owner/Operator	Landfill Class	Tons/Day (5-Year Average)	Estimated Closure
Crestline Class II Landfill	Lincoln County	II	14.38	2038
Mesquite Municipal Waste Landfill	City of Mesquite	I	139.58	
Western Elite	Western Elite	I and III	1,608.32	2027

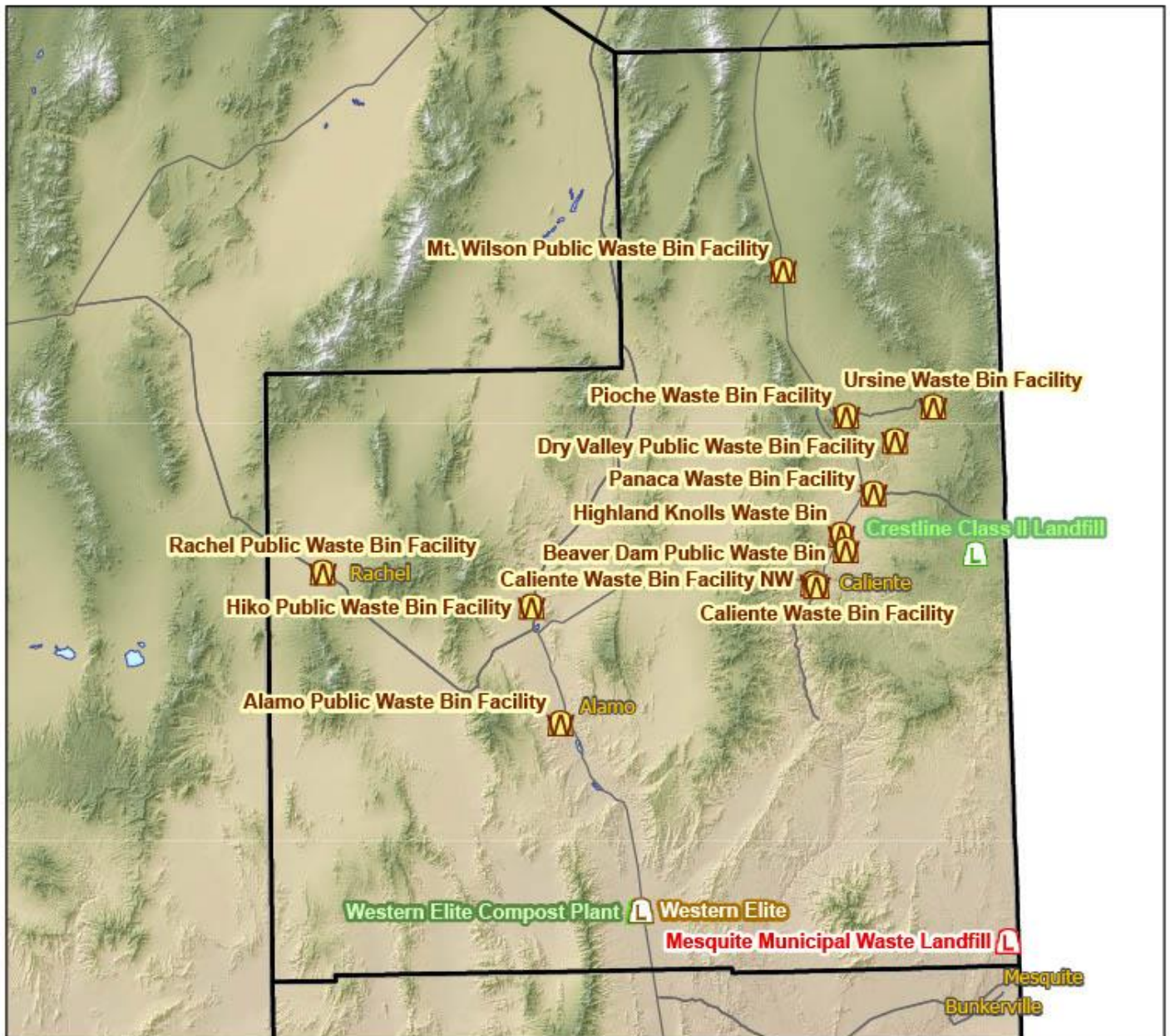
Solid Waste/Recyclables Collection Services:

Waste can be dropped off at a public waste bin site or facility.

Household Hazardous Waste Collection:

Used oil and car batteries can be dropped off to a recycling facility but not at the landfill. No other services provided.

Lincoln County Solid Waste Facilities



Legend

- | | | |
|---------------------------|----------------------------|-------------------|
| Landfills Class I | Landfills Class II and III | Compost Facility |
| Landfills Class II | Proposed Landfills | County Boundaries |
| Landfills Class III | Transfer Stations | Major Roads |
| Landfills Class I and III | Waste Bin | Lakes |



0 5 10 20 30 40 Miles

Lyon County

Local Solid Waste Planning:

Responsible Agency: Lyon County

Plan Date: October 8, 2003

Population and Solid Waste Trends:

	2012	2013	2014	2015	2016	2017	2018	2019	2020	2021
Population	52,245	52,960	53,344	53,277	53,644	54,657	55,551	56,497	57,629	58,051
MSW Disposed of in County (tons)	0	0	0	0	0	0	0	0	0	0
Industrial/Special Waste Disposed in County (tons)	0	0	0	0	0	0	0	0	0	0
Imported MSW Disposed (tons)	0	0	0	0	0	0	0	0	0	0
MSW Generated in County (Tons) - Excluding Recycled MSW	39,648	43,428	43,716	37,662	35,519	33,317	39,248	51,397	58,066	62,447
MSW Recycled (tons)	0	0	0	0	54	44	0	240	4,260	1,655
Total MSW Generated per Capita (lbs./day/person)	4.16	4.49	4.49	3.87	3.63	3.34	3.87	5.01	5.93	6.05

*Population data from NV State Demographer

Active Municipal Solid Waste Landfills:

Site Name	Owner/Operator	Landfill Class	Tons/Day (5-Year Average)	Estimated Closure
None in this county	-	-	-	-

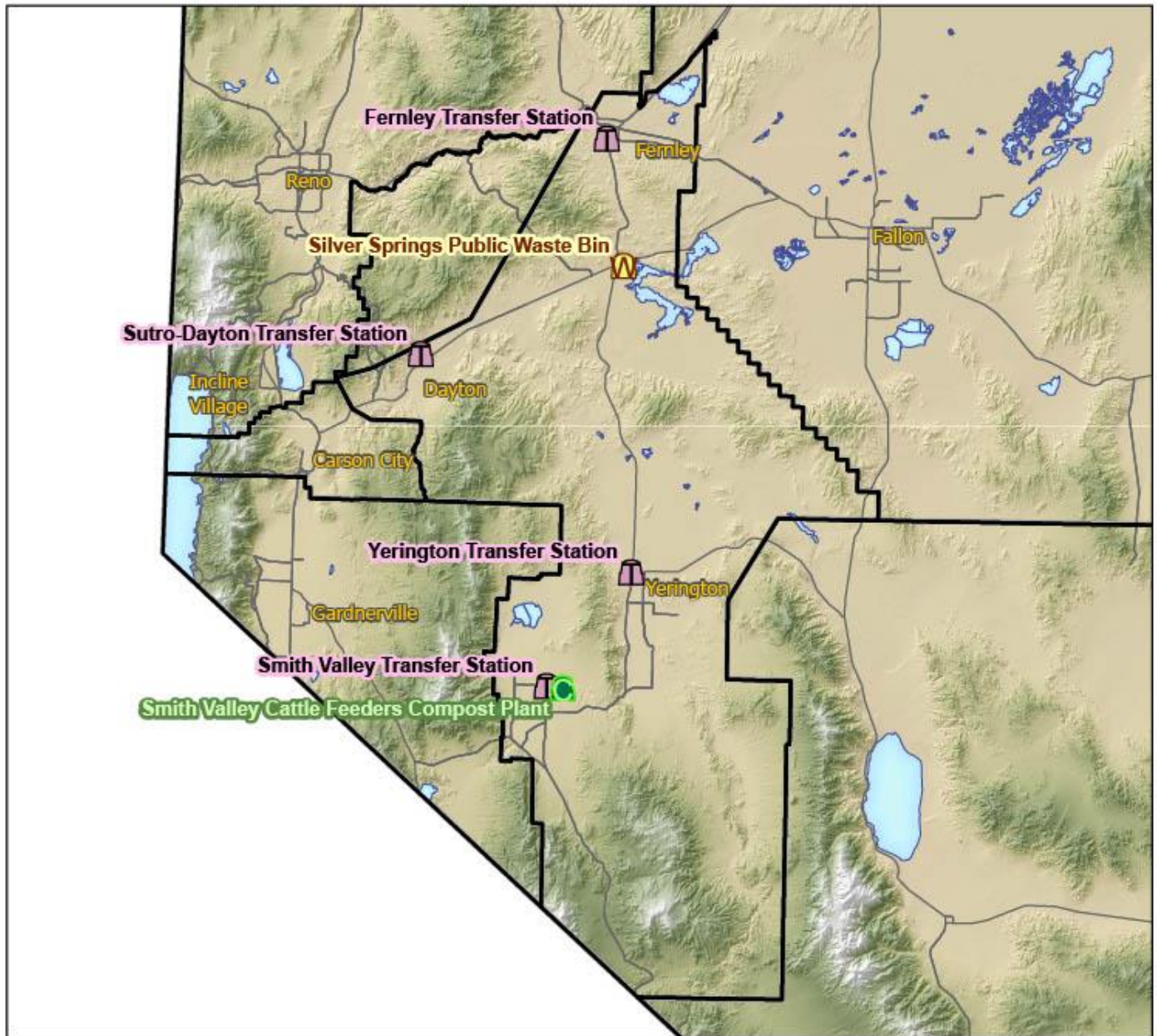
Solid Waste/Recyclables Collection Services:

Haulers providing weekly pickup of MSW include Capital Sanitation Waste Management (Dayton), Fernley Disposal WM (Fernley and Silver Springs), and D&S Waste Disposal (Yerington). Recyclable materials can be dropped off at the Fernley Transfer Station (TS) and the Sutro-Dayton TS. Silver Springs Waste Bin accepts single-stream recycling. Commercial recycling include options such as a roll off and bale route.

Household Hazardous Waste Collection:

Used oil, Used antifreeze and car battery collection at Sutro-Dayton TS, Commercial Row TS, and Fernley TS. For Waste Management areas, customers are referred to local business partners for disposal of HHW.

Lyon County Solid Waste Facilities



0 5 10 20 30 40 Miles

Legend

- | | | |
|---------------------------|----------------------------|-------------------|
| Landfills Class I | Landfills Class II and III | Compost Facility |
| Landfills Class II | Proposed Landfills | County Boundaries |
| Landfills Class III | Transfer Stations | Major Roads |
| Landfills Class I and III | Waste Bin | Lakes |

Mineral County

Local Solid Waste Planning:

Responsible Agency: Mineral County

Plan Date: January 5, 2017

Population and Solid Waste Trends:

	2012	2013	2014	2015	2016	2017	2018	2019	2020	2021
Population	4,679	4,662	4,584	4,539	4,578	4,674	4,690	4,730	4,896	4,826
MSW Disposed of in County (tons)	3,619	3,749	3,857	3,662	3,835	3,859	1,547	1,566	1,647	1,305
Industrial/Special Waste Disposed in County (tons)	7,953	6,402	6,569	5,058	4,480	5,569	6,060	5,695	8,298	8,415
Imported MSW Disposed (tons)	0	0	0	0	0	0	0	0	0	0
MSW Generated in County (Tons) - Excluding Recycled MSW	7,227	3,749	3,857	3,662	3,835	3,859	1,547	1,566	1,647	1,305
MSW Recycled (tons)	n/a	n/a	n/a	n/a	n/a	n/a	n/a	n/a	n/a	n/a
Total MSW Generated per Capita (lbs./day/person)	8.46	4.41	4.61	4.42	4.59	4.52	1.81	1.81	1.84	1.48

*Population data from NV State Demographer

Active Municipal Solid Waste Landfills:

Site Name	Owner/Operator	Landfill Class	Tons/Day (5-Year Average)	Estimated Closure
Hawthorne Landfill	Mineral County/Hawthorne Utilities	I	21.78	2035

Solid Waste/Recyclables Collection Services:

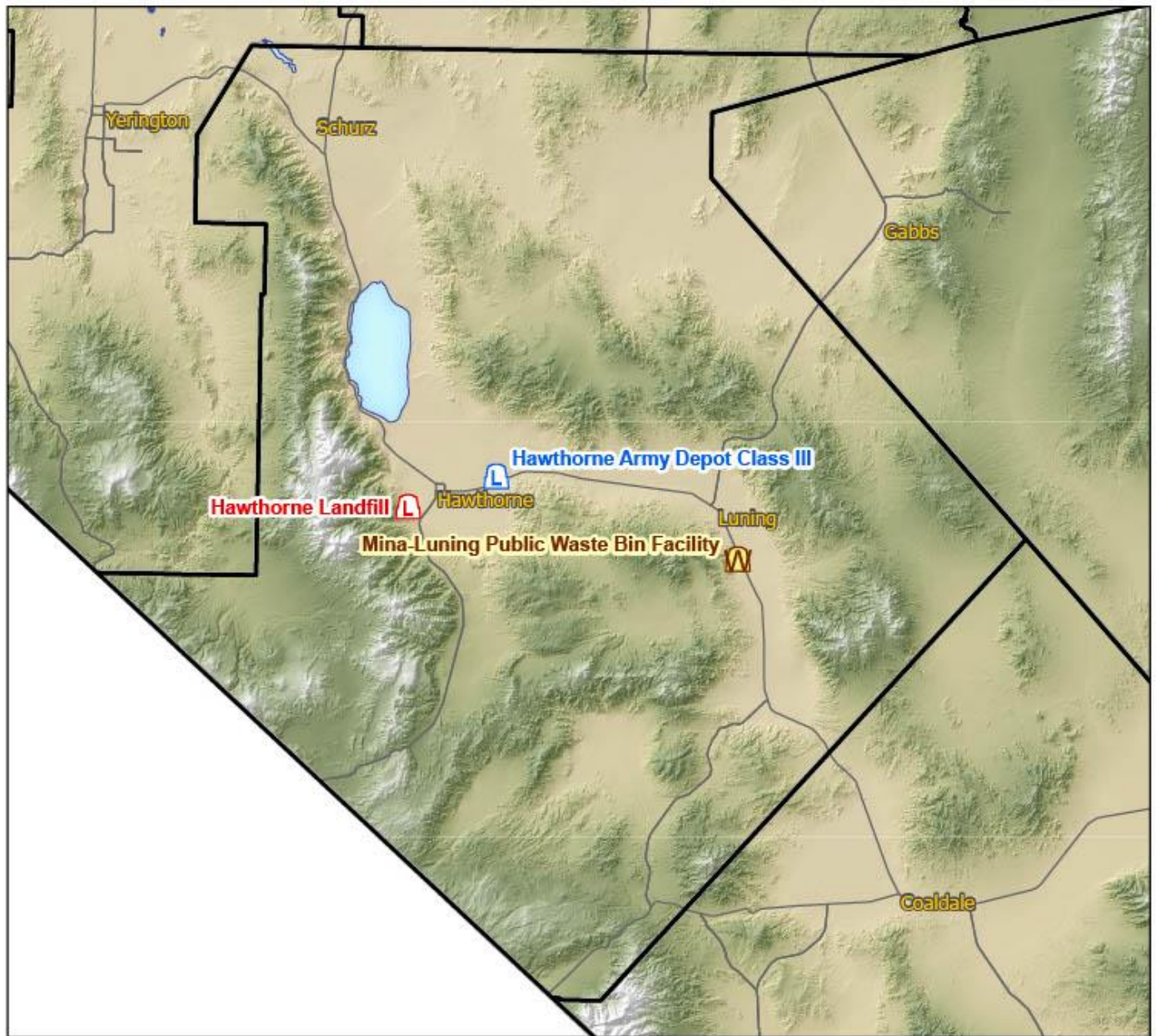
Hawthorne Utilities provides waste hauling for Hawthorne. Walker Lake Disposal provides dumpsters and drop box rental.

Scrap metal is collected for recycling and sent off when the county has enough for a company to take it.

Household Hazardous Waste Collection:

HHW drop off is available at the landfill. Used oil drums are brought to Reno for disposal. Batteries are collected for recycling by Interstate Batteries.

Mineral County Solid Waste Facilities



0 7.5 15 22.5 30 Miles

Legend

- | | | |
|---------------------------|----------------------------|-------------------|
| Landfills Class I | Landfills Class II and III | Compost Facility |
| Landfills Class II | Proposed Landfills | County Boundaries |
| Landfills Class III | Transfer Stations | Major Roads |
| Landfills Class I and III | Waste Bin | Lakes |

Nye County

Local Solid Waste Planning:

Responsible Agency: Nye County

Plan Date: October 16, 2014

Population and Solid Waste Trends:

	2012	2013	2014	2015	2016	2017	2018	2019	2020	2021
Population	44,292	44,749	45,456	46,050	45,737	46,390	47,856	48,472	48,414	49,289
MSW Disposed of in County (tons)	56,007	60,683	66,216	63,865	65,605	80,117	86,567	108,630	89,536	81,101
Industrial/Special Waste Disposed in County (tons)	9,688	15,820	10,764	16,959	15,925	11,868	14,164	27,695	20,269	15,407
Imported MSW Disposed (tons)	2,782	3,286	1,817	2,189	1,816	7,239	5,520	2,867	2,208	3,067
MSW Generated in County (Tons) - Excluding Recycled MSW	53,225	53,408	59,174	61,676	63,735	80,117	86,567	108,630	89,536	81,101
MSW Recycled (tons)	n/a	n/a	n/a	n/a	n/a	n/a	n/a	n/a	n/a	n/a
Total MSW Generated per Capita (lbs./day/person)	6.58	6.54	7.13	7.34	7.64	9.46	9.91	12.28	10.13	9.02

*Population data from NV State Demographer

Active Municipal Solid Waste Landfills:

Site Name	Owner/Operator	Landfill Class	Tons/Day (5-Year Average)	Estimated Closure
Pahrump Valley Landfill	C&S Waste Solutions of Nevada	I	212.44	2038
Round Mountain Disposal Site	Nye County/Smokey Valley Service	II	23.85	2035
Tonopah Landfill	Nye County	II	51.08	2033
Tonopah Test Range *	DAF	II	2.78	2106
NTS - Area 23 Landfill *	DOE	II	0.99	-

*Facility not open to the general public

Solid Waste/Recyclables Collection Services:

Amargosa Valley: C&S Waste Solutions provides weekly or bi-weekly pickup of MSW. Recyclables can be dropped off at the Northwest Academy.

Beatty: C&S Waste Solutions provides MSW pickup services. Central Beatty has pickup throughout the week and rural areas are bi-weekly to monthly pickup. Recyclable materials can be dropped off at the Rebel Gas Station on 102 E. Hwy. 95.

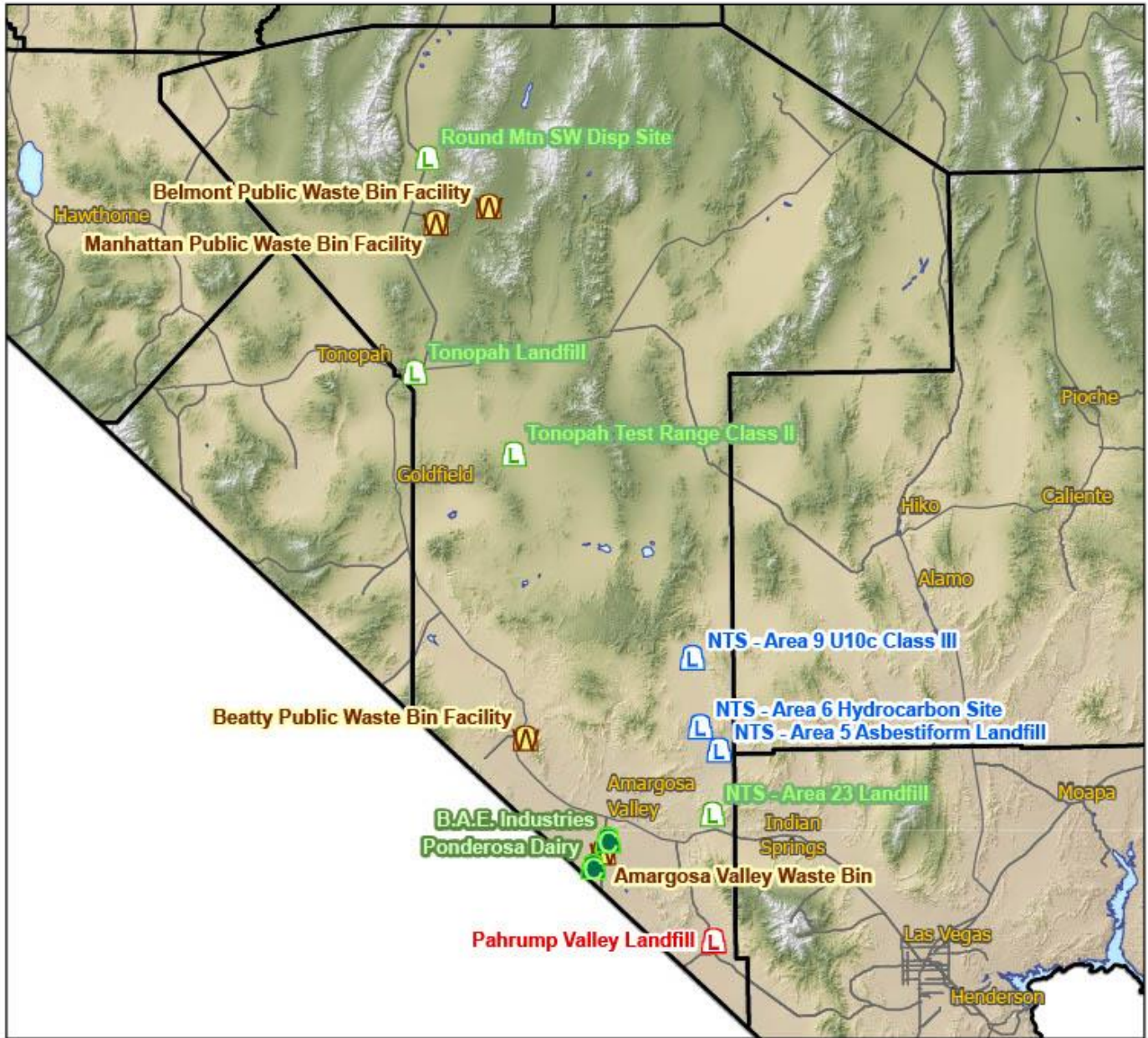
Pahrump: Pahrump Valley Disposal/C&S Waste Solutions offers weekly MSW curbside pickup. Residents can drop off recyclables at the Pahrump Valley Disposal Metal Yard and Wal-Mart Shopping Center on 300 S. Hwy 160.

Pahrump Valley Landfill takes scrap metal and buys non-ferrous metals including vehicles, heavy equipment, appliances, iron, tin, copper, brass, and car batteries.

Household Hazardous Waste Collection:

E-waste drop off at metal yard Pahrump Valley Landfill. Sharps to be sealed in hard plastic container and placed next to garbage cart, or landfill drop off.

Nye County Solid Waste Facilities



Legend

- | | | |
|---------------------------|----------------------------|-------------------|
| Landfills Class I | Landfills Class II and III | Compost Facility |
| Landfills Class II | Proposed Landfills | County Boundaries |
| Landfills Class III | Transfer Stations | Major Roads |
| Landfills Class I and III | Waste Bin | Lakes |



0 10 20 40 60 80 Miles

Pershing County

Local Solid Waste Planning:

Responsible Agency: Pershing County

Plan Date: October 8, 2014

Population and Solid Waste Trends:

	2012	2013	2014	2015	2016	2017	2018	2019	2020	2021
Population	7,013	6,882	6,714	6,750	6,693	6,743	6,858	6,935	6,983	6,984
MSW Disposed of in County (tons)	5,514	3,628	3,878	3,944	4,253	4,065	4,064	4,288	4,685	4,515
Industrial/Special Waste Disposed in County (tons)	1,861	2,507	1,604	1,271	878	996	1,382	1,367	2,434	3,278
Imported MSW Disposed (tons)	0	0	0	0	0	0	0	0	0	0
MSW Generated in County (Tons) - Excluding Recycled MSW	5,514	3,628	3,878	3,944	4,253	4,065	4,064	4,288	4,685	4,523
MSW Recycled (tons)	n/a	n/a	n/a	n/a	n/a	n/a	n/a	n/a	n/a	n/a
Total MSW Generated per Capita (lbs./day/person)	4.31	2.89	3.17	3.20	3.48	3.30	3.25	3.39	3.68	3.55

*Population data from NV State Demographer

Active Municipal Solid Waste Landfills:

Site Name	Owner/Operator	Landfill Class	Tons/Day (5-Year Average)	Estimated Closure
Pershing County Landfill	Pershing County	II	17.03	2139

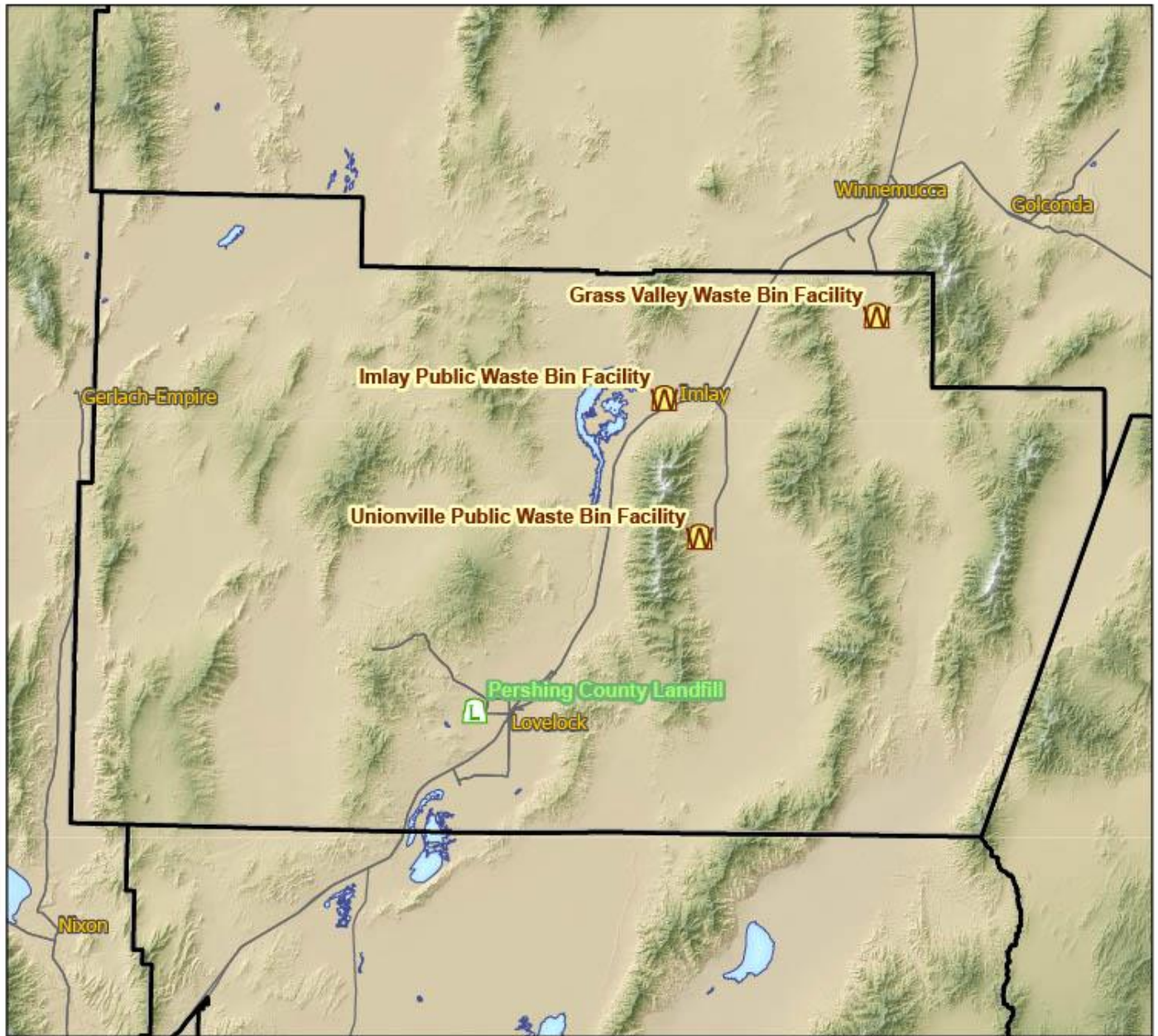
Solid Waste/Recyclables Collection Services:

Waste haulers include Hoss Disposal, Desert Disposal, and City of Lovelock. Weekly curbside pickup of MSW is provided. No curbside recycling service is offered. Big Meadows Recycling Center in Lovelock is a drop off location for cans, aluminum foil, cardboard, newsprint, magazines, paper, glass, and household-use plastic containers.

Household Hazardous Waste Collection:

E-waste and used oil are accepted at the county landfill.

Pershing County Solid Waste Facilities



0 5 10 20 30 40 Miles

Legend

- | | | |
|---------------------------|----------------------------|-------------------|
| Landfills Class I | Landfills Class II and III | Compost Facility |
| Landfills Class II | Proposed Landfills | County Boundaries |
| Landfills Class III | Transfer Stations | Major Roads |
| Landfills Class I and III | Waste Bin | Lakes |

Storey County

Local Solid Waste Planning:

Responsible Agency: Storey County

Plan Date: January 24, 2011

Population and Solid Waste Trends:

	2012	2013	2014	2015	2016	2017	2018	2019	2020	2021
Population	4,103	4,017	3,974	3,984	4,043	4,084	4,227	4,258	4,304	4,359
MSW Disposed of in County (tons)	709,077	741,484	742,140	743,118	720,742	491,307	533,699	558,035	595,039	577,935
Industrial/Special Waste Disposed in County (tons)	223,019	245,965	226,531	248,936	359,538	460,228	555,794	540,013	344,062	304,928
Imported MSW Disposed (tons)	202,175	207,621	227,140	232,925	235,783	232,143	230,744	226,972	224,217	208,358
MSW Generated in County (Tons) - Excluding Recycled MSW	3,374	3,731	3,602	3,815	3,908	3,463	3,307	7,440	26,090	74,611
MSW Recycled (tons)	n/a	n/a	n/a	n/a	n/a	n/a	n/a	n/a	n/a	n/a
Total MSW Generated per Capita (lbs./day/person)	4.51	5.09	4.97	5.25	5.30	4.65	4.29	9.57	33.22	93.79

*Population data from NV State Demographer

Active Municipal Solid Waste Landfills:

Site Name	Owner/Operator	Landfill Class	Tons/Day (5-Year Average)	Estimated Closure
Lockwood Regional Landfill	Waste Management, Inc.	I and III	3,333.41	2139

Solid Waste/Recyclables Collection Services:

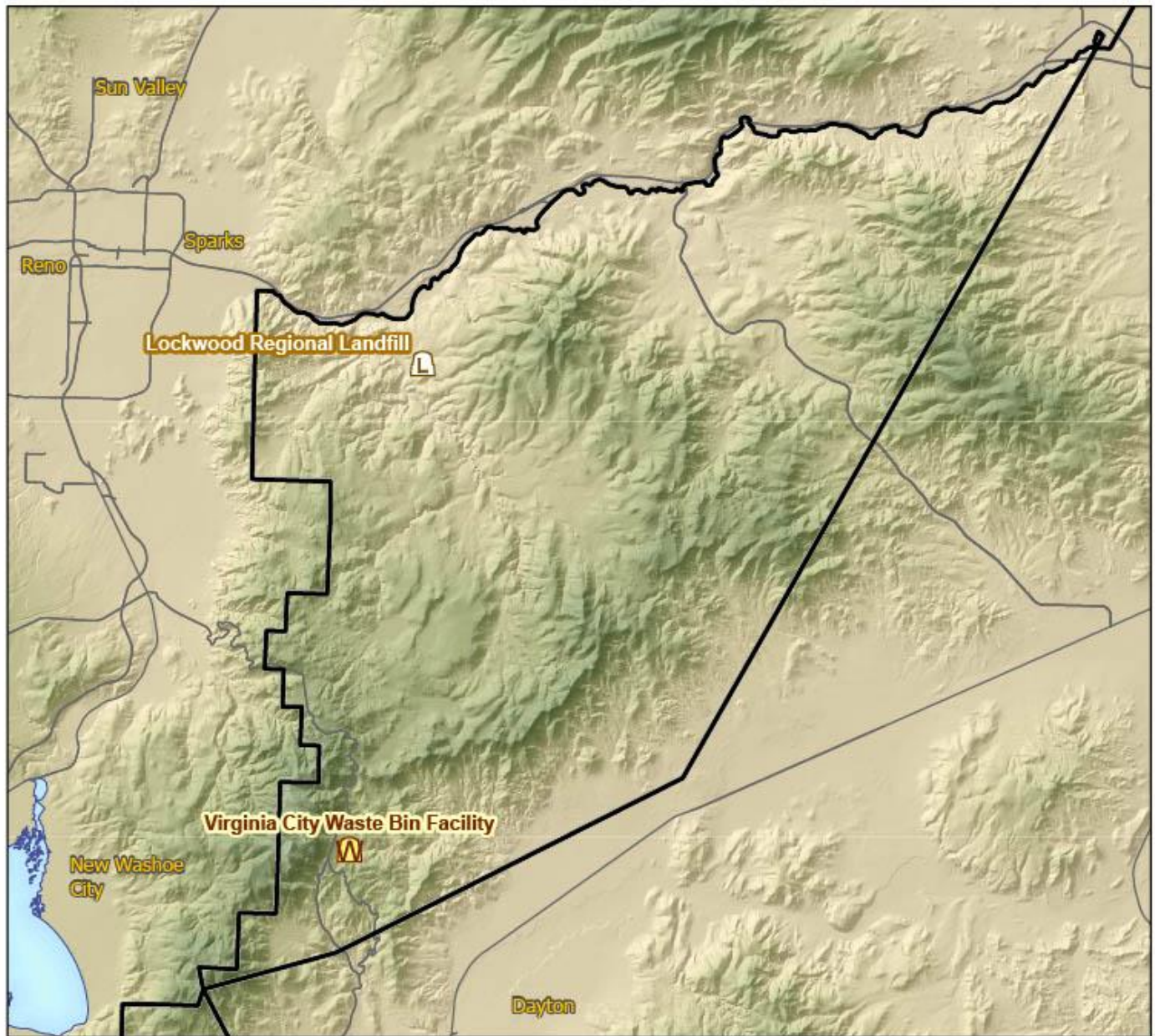
Virginia City: Curbside MSW pickup is provided weekly. Single stream recycling drop off available at Waste Bin site.

Storey County residents are entitled to three (3) free-dump vouchers per year to use at the Virginia City Transfer Station or the Lockwood Regional Landfill.

Household Hazardous Waste Collection:

Used oil, used antifreeze, and car battery are collected at Virginia City Transfer Station. E-waste is accepted at Lockwood Landfill.

Storey County Solid Waste Facilities



0 2 4 6 8 Miles

Legend

- | | | |
|---------------------------|----------------------------|-------------------|
| Landfills Class I | Landfills Class II and III | Compost Facility |
| Landfills Class II | Proposed Landfills | County Boundaries |
| Landfills Class III | Transfer Stations | Major Roads |
| Landfills Class I and III | Waste Bin | Lakes |

Washoe County

Local Solid Waste Planning:

Responsible Agency: Washoe County Health District

Plan Date: March 8, 2017

Population and Solid Waste Trends:

	2012	2013	2014	2015	2016	2017	2018	2019	2020	2021
Population	427,704	432,324	436,797	441,946	448,316	451,923	460,237	469,801	473,606	485,113
MSW Disposed of in County (tons)	0	0	0	0	0	0	0	0	0	0
Industrial/Special Waste Disposed in County (tons)	0	0	0	0	0	0	0	0	0	0
Imported MSW Disposed (tons)	0	0	0	0	0	0	0	0	0	0
MSW Generated in County (Tons) - Excluding Recycled MSW	432,850	459,036	438,948	438,777	427,140	445,950	486,580	491,651	491,371	422,266
MSW Recycled (tons)	219,211	264,178	221,390	200,470	178,650	145,633	205,659	122,396	185,732	175,972
Total MSW Generated per Capita (lbs./day/person)	8.35	9.17	8.28	7.93	7.40	7.17	8.24	5.73	7.83	6.76

*Population data from NV State Demographer

Active Municipal Solid Waste Landfills:

Site Name	Owner/Operator	Landfill Class	Tons/Day (5-Year Average)	Estimated Closure
None in this county	-	-	-	-

Solid Waste/Recyclables Collection Services:

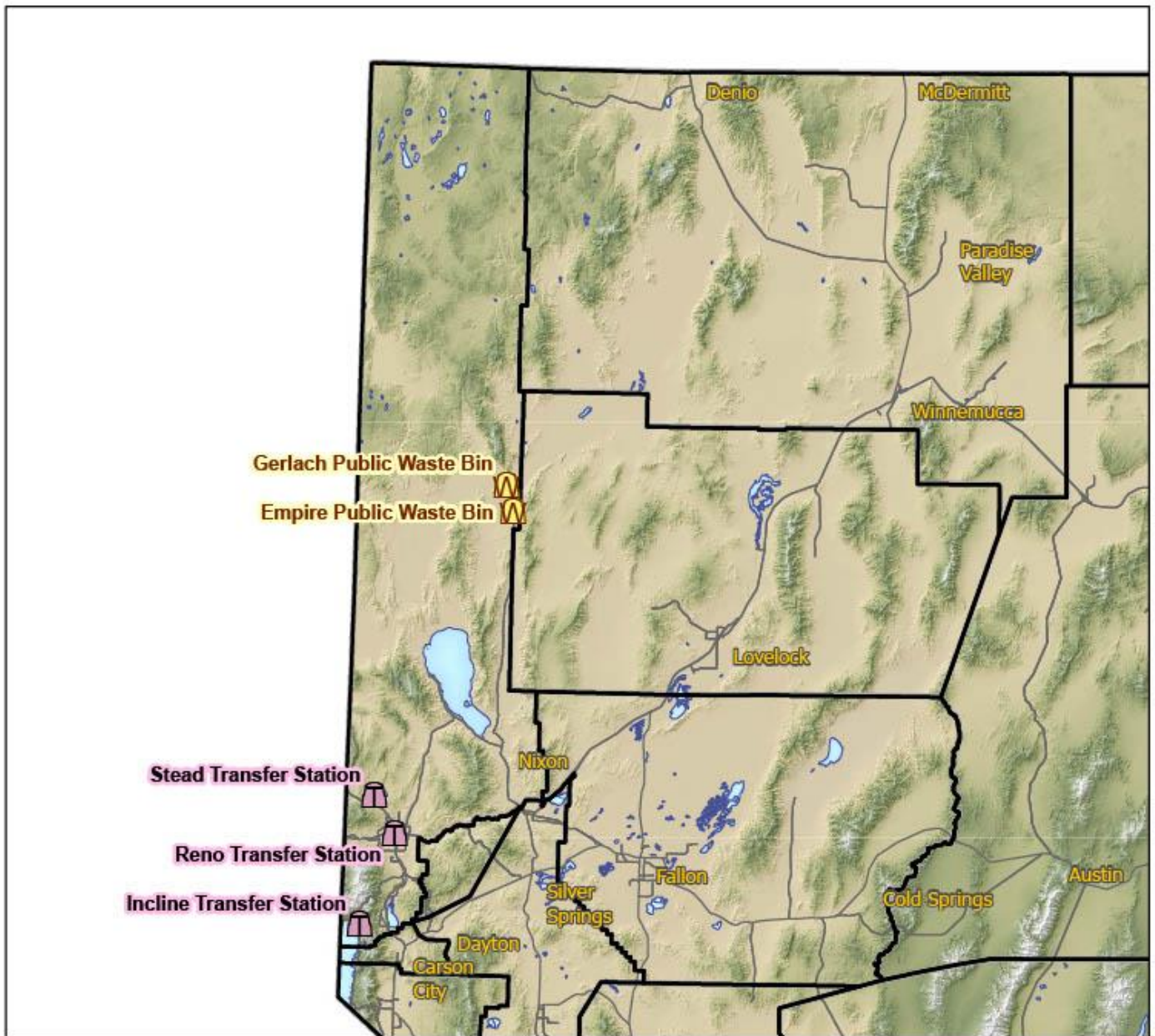
Reno/Sparks/Outlying Washoe County: Waste Management (WM) provides weekly MSW pickup and bi-weekly curbside recycling. Single stream recycling bins are available at transfer stations for drop off. Metal drop off, and e-waste drop off are also available at transfer stations.

Incline Village: Waste Management picks up MSW & recyclables up weekly. Pine needles are collected seasonally.

Household Hazardous Waste Collection:

Used oil, used antifreeze and car battery collection is available at Commercial Row Transfer Station (TS), Stead TS, and Incline TS. Sharps drop off is available at Commercial Row TS. WM customers are referred to local business partners for disposal of HHW. Historically, WM has sponsored community drop off events and voucher programs. Currently, WM partners with GrayMar to offer reduced disposal rates for WM customers.

Washoe County Solid Waste Facilities



0 25 50 75 100 Miles

Legend

- | | | |
|---------------------------|----------------------------|-------------------|
| Landfills Class I | Landfills Class II and III | Compost Facility |
| Landfills Class II | Proposed Landfills | County Boundaries |
| Landfills Class III | Transfer Stations | Major Roads |
| Landfills Class I and III | Waste Bin | Lakes |

White Pine County

Local Solid Waste Planning:

Responsible Agency: White Pine County

Plan Date: August 23, 2006

Population and Solid Waste Trends:

	2012	2013	2014	2015	2016	2017	2018	2019	2020	2021
Population	9,945	10,095	10,218	10,336	10,413	10,705	10,678	10,826	10,477	10,293
MSW Disposed of in County (tons)	8,170	8,575	7,814	7,770	7,580	7,435	7,126	6,851	6,922	7,323
Industrial/Special Waste Disposed in County (tons)	9,564	5,914	7,441	6,626	5,979	6,742	7,474	8,740	9,269	11,878
Imported MSW Disposed (tons)	0	0	0	0	0	0	0	0	0	0
MSW Generated in County (Tons) - Excluding Recycled MSW	8,170	7,717	7,814	7,770	7,580	7,435	7,126	6,852	6,922	7,323
MSW Recycled (tons)	n/a	n/a	n/a	n/a	n/a	n/a	n/a	n/a	n/a	n/a
Total MSW Generated per Capita (lbs./day/person)	4.50	4.19	4.19	4.12	3.99	3.81	3.66	3.47	3.62	3.90

*Population data from NV State Demographer

Active Municipal Solid Waste Landfills:

Site Name	Owner/Operator	Landfill Class	Tons/Day (5-Year Average)	Estimated Closure
Ely City Landfill	City of Ely	I and III	43.7	2070

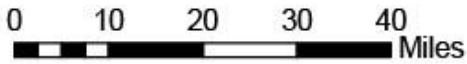
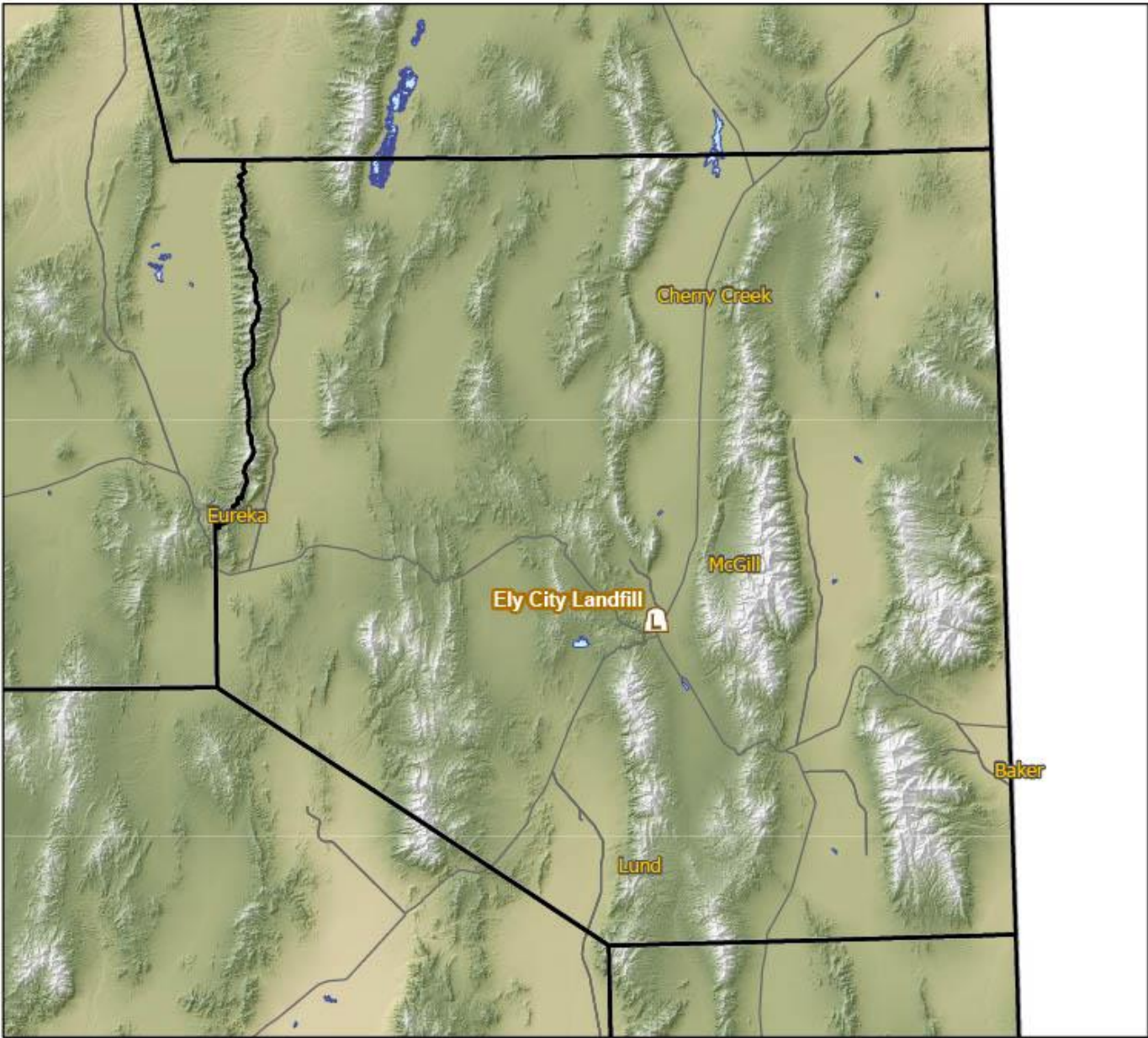
Solid Waste/Recyclables Collection Services:

Ely Disposal offers weekly MSW pickup. No recycling curbside services are provided. One drop off location is available 24/7 outside the landfill gated area for aluminum only. Recycling of used tires, white goods, scrap metal, used motor oil, and aluminum cans is offered on site at the Ely City Landfill to be dropped off and separated by the generator.

Household Hazardous Waste Collection:

Used motor oil receptacle that is donated to various companies to be burned for heat. Automotive batteries are pulled from the waste stream, stockpiled on pallets in a designated area near the recycling bins, and periodically removed for recycling. In addition, local battery suppliers currently accept batteries for recycling.

White Pine County Solid Waste Facilities



Legend

- | | | |
|---------------------------|----------------------------|-------------------|
| Landfills Class I | Landfills Class II and III | Compost Facility |
| Landfills Class II | Proposed Landfills | County Boundaries |
| Landfills Class III | Transfer Stations | Major Roads |
| Landfills Class I and III | Waste Bin | Lakes |